

GODLEY INDEPENDENT SCHOOL DISTRICT
GODLEY HIGH SCHOOL - PHASE THREE

APRIL 25, 2022

SCHEMATIC DESIGN PRESENTATION



ACKNOWLEDGMENTS	01
NARRATIVE	02
PROGRAM	03
SITE PLANS	04
CONCEPTUAL PROCESS	05
FLO (REDACTED) ANS	06
PERSPECTIVES	07
SCHEDULE	08



GODLEY INDEPENDENT SCHOOL DISTRICT GODLEY HIGH SCHOOL PHASE 3

DISTRICT BOARD OF TRUSTEES

Matt McKittrick	Board President
Dennis McFarlin	Board Vice President
Craig Stevenson	Board Secretary
Marissa Abbott	Board Member
Terrie Goodloe	Board Member
Christa Heiner	Board Member
Greg L. Miller	Board Member

GODLEY ISD DESIGN TEAM

Dr. Rich Dear	Superintendent
Jason Karnes	Assistant Superintendent
Airemy Caudle	Learning Design & Curation Director
Joe Walker	Fine Arts Director
Kurtis Flood	Principal, Godley High School
Lacey Manuel	Child Nutrition Director

PROJECT TEAM

Aubrey Slaybaugh, AIA, LEED AP
Principal, Huckabee

Casey Casstevens, AIA, RID
Director of Design,
Fort Worth, Huckabee

Brian Green, AIA
Project Architect, Huckabee

Lauren Hoyle, RID
Interior Designer, Huckabee

Jenna Norton, AIA
Planning, Huckabee

Adolfo Gonzalez
Architectural Associate, Huckabee

Jennifer Hay
Architectural Associate, Huckabee

Megan Patterson
Interior Design Associate,
Huckabee

CIVIL ENGINEERING & LANDSCAPE ARCHITECTURE

Langan Engineering
Dallas, TX

STRUCTURAL ENGINEERING

Huckabee
Fort Worth, TX

MEP ENGINEERING

Romine, Romine and Burgess
Fort Worth, TX

TECHNOLOGY

True North Consulting Group
Waco, TX

FOOD SERVICE

JMK Food Service Consulting & Design
Rowlett, TX

BUILDING ENVELOPE

Engineered Exteriors
Austin, TX

ACOUSTICIAN

BAI
Dallas, TX





GODLEY INDEPENDENT SCHOOL DISTRICT

GODLEY HIGH SCHOOL PHASE 3

INTRODUCTION

On May 1, 2021, Godley ISD passed a \$168,500,000 bond package, which includes phases 2 and 3 of Godley High School. Phase 2, the CTE and Athletics additions, are currently under construction. Phase 3 is focused on bringing fine arts spaces, currently located at and shared with the adjacent middle school campus onto the high school campus, which will allow for growth at both campuses. This addition will also include an expansion of the kitchen and CL&I.

DESIGN PROCESS

Huckabee met with district administration and fine arts staff and reviewed the current fine arts spaces at Godley Middle School, discussing what works well and what could be improved or modified for the high school design. A design charrette was held at the high school, allowing staff to participate in creating options for the layout of these areas. Huckabee also met with Child Nutrition Services to discuss needs for the kitchen expansion to meet the growth expectations of the campus.

SITE

While portions of the high school master plan have been modified over time, the location of the fine arts addition has remained consistent. This portion of the building will be located over the existing practice fields to the south of the main entrance. Through discussions with the district, careful consideration has been given about the overall master plan for Godley High School and how future phases will integrate into phase 3. Future phases in proximity to the fine arts addition will include another classroom wing, special education classrooms, theater, dance, and a performing arts center.

There will be minor site adjustments to accommodate this addition, including a loading area and a few additional parking spaces. The practice fields will be relocated to an area on the south side of the creek, accessible by the new driveway that will be constructed as part of phase 2.

CL&I AND KITCHEN EXPANSION

Phase 3 includes expanding the kitchen to ultimately serve 2,500 students. This includes additional freezer and cooler space, prep space, and serving lines. The Center for Learning and Innovation (CL&I) will almost double in size, providing additional dining and collaboration space to serve 2,000 students. The master plan includes another CL&I expansion to support 2,500 total students. These spaces will tie into the existing kitchen and CL&I.

FINE ARTS ADDITION

The fine arts addition extends south from the expanded CL&I and includes two visual art labs, a new choir suite, and a new band suite. The visual art labs are next to the CL&I and near an indoor and outdoor collaboration space. These adjacencies provide creative opportunities to work on, present, and display projects beyond the classrooms. There is shell space above these classrooms for two additional art labs to be completed in a future phase.

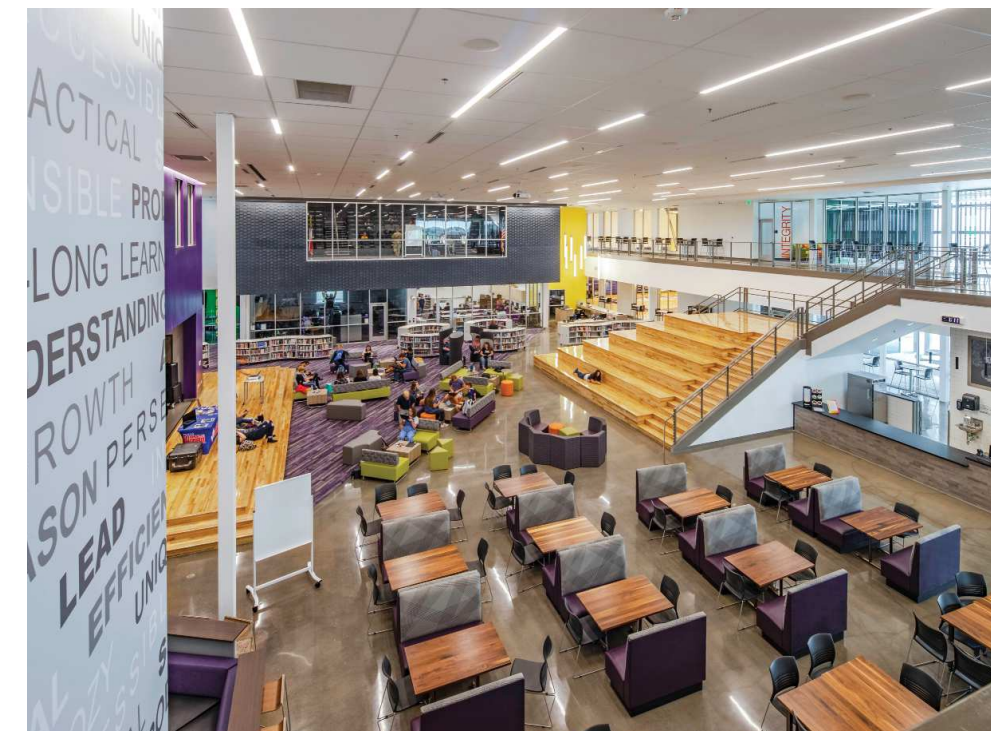
The new choir suite includes a rehearsal space for 50 students, storage spaces, an office, and access to shared practice rooms with band. The choir hall will be shared with theater temporarily until a future addition provides designated spaces for the theater program. The band hall and accessory spaces are similar in number and size to Godley Middle School with two additional rehearsal spaces for large ensembles and percussion. The band hall will serve 150 students, the large ensemble space 65 students, and the percussion space 30 students. The band suite will also serve as the code-required tornado shelter for the entire campus. In future additions, as the campus population grows, the extent of the tornado shelter will also have to be increased.

EXTERIOR

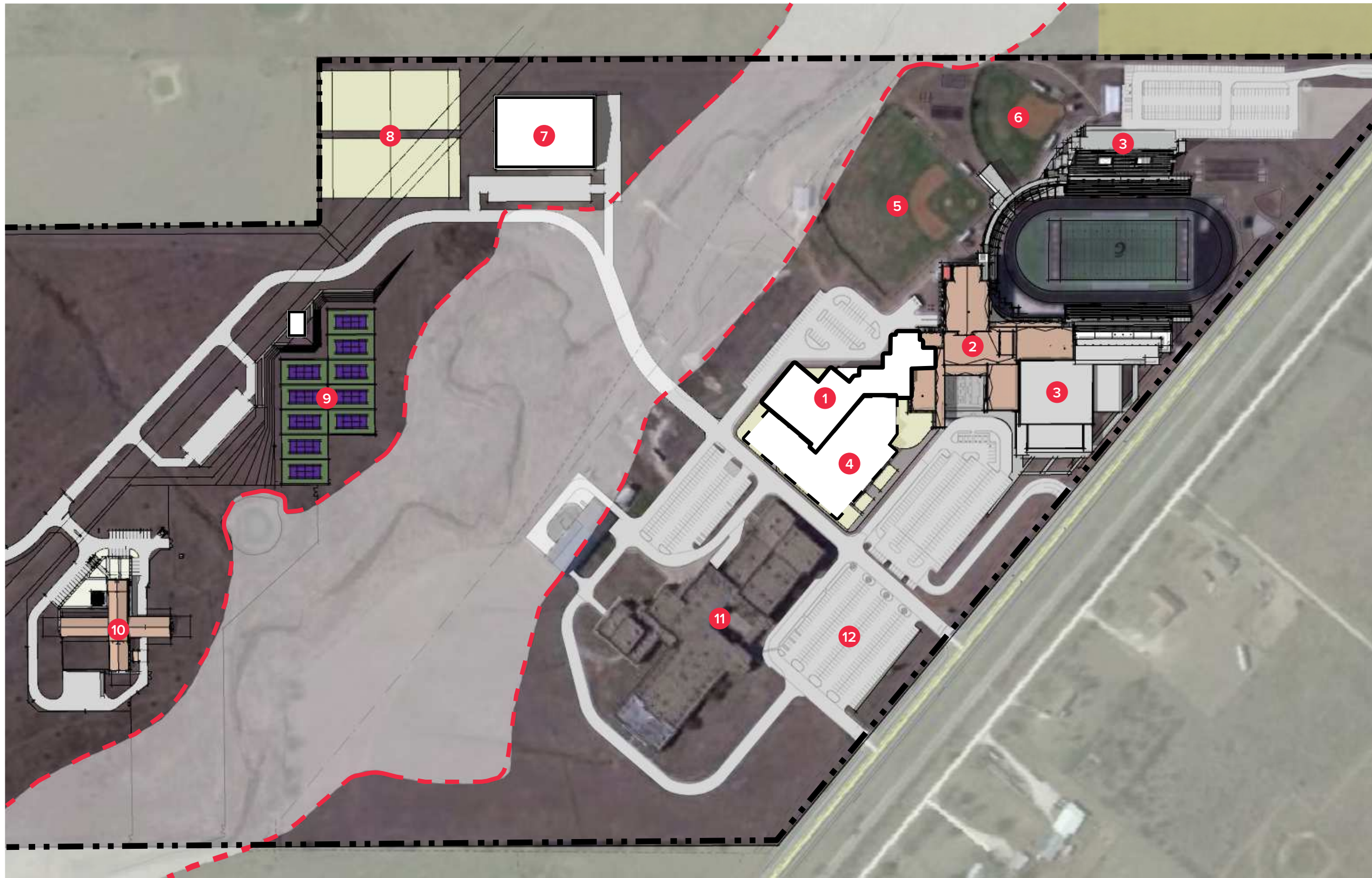
To create a cohesive overall design, the new additions will take on the same materiality as is on the existing building today. This consists of brick and metal profile wall panels. As a part of this Phase 3 design, the planning of future addition(s) was kept in mind. Because of that, the wall construction, materials used, and openings created in this wall are intentional to allow the future additions to be integrated with minimal impact and rework. Most of the windows can be repurposed into the future phases.

SCHEDULE

Construction will start in December 2022 and be complete in December 2023. The building will be operational for the spring semester beginning in January 2024.



GODLEY HIGH SCHOOL - CL&I



SITE PLAN KEY

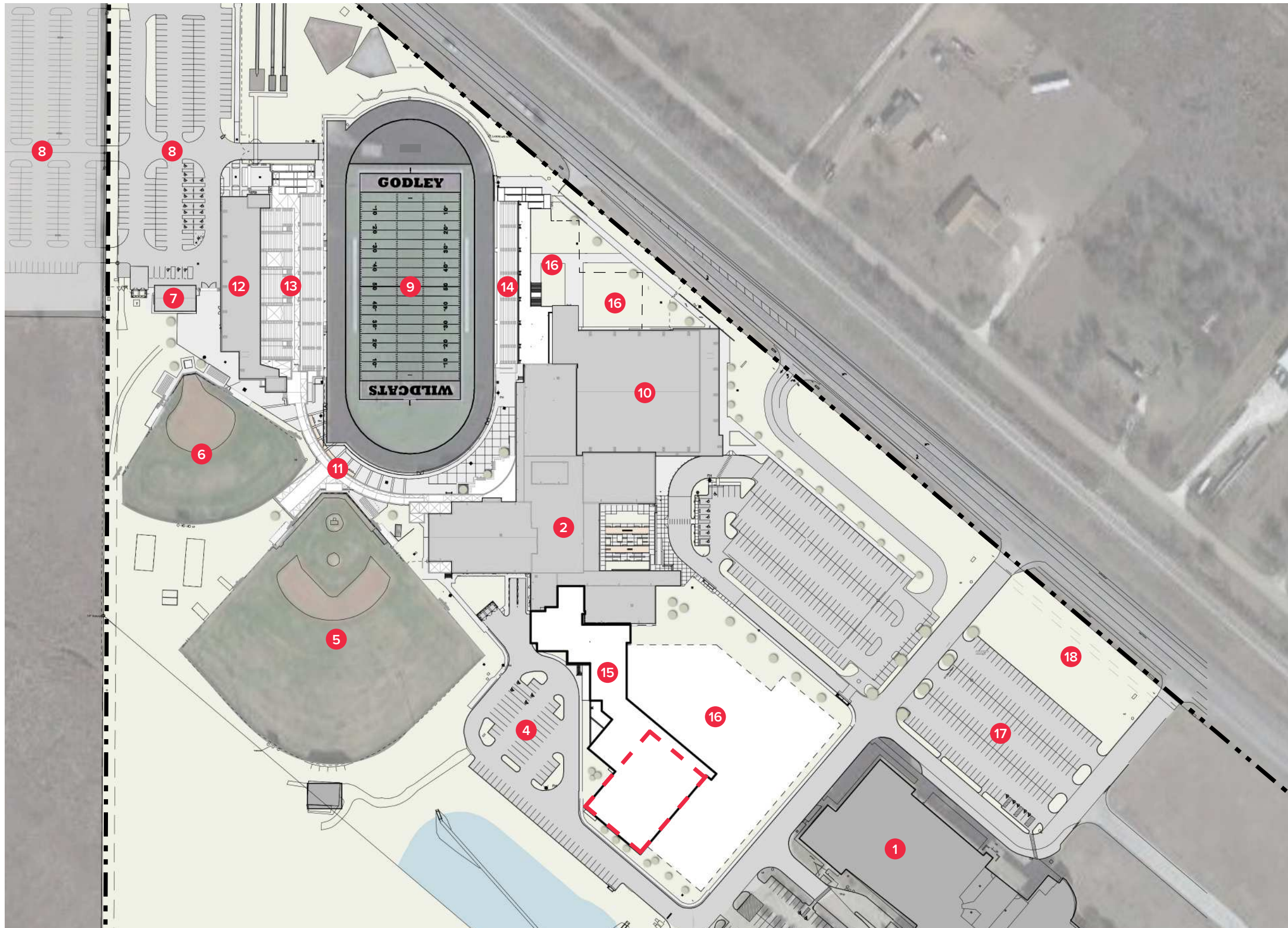
- 1 PHASE 3 - NEW KITCHEN, CL&I AND FINE ARTS ADDITION
- 2 EXISTING HIGH SCHOOL
- 3 PHASE 2 HIGH SCHOOL ADDITION
- 4 FUTURE ADDITION
- 5 EXISTING BASEBALL FIELD
- 6 EXISTING SOFTBALL FIELD
- 7 FUTURE PRACTICE FACILITY
- 8 NEW PRACTICE FIELDS
- 9 8 TENNIS COURTS AND 2 FUTURE COURTS
- 10 EXISTING AG FACILITY
- 11 EXISTING MIDDLE SCHOOL
- 12 BAND PRACTICE LOT

LINE TYPE LEGEND

- NEW BUILDING
- PROPERTY LINE
- FLOOD PLAIN



NORTH



SITE PLAN KEY

- 1 EXISTING MIDDLE SCHOOL
- 2 EXISTING HIGH SCHOOL
- 3 EXISTING VISTOR/STUDENT PARKING
- 4 EXISTING STAFF PARKING
- 5 EXISTING BASEBALL FIELD
- 6 EXISTING SOFTBALL FIELD
- 7 EXISTING LOCKER ROOMS
- 8 STADIUM/FIELDS PARKING
- 9 EXISTING FOOTBALL FIELD/ TRACK
- 10 PHASE 2 ARENA AND CLASSROOM ADDITION
- 11 PHASE 2 WALKWAY ADDITION
- 12 PHASE 2 CTE ADDITION
- 13 HOME SEATING - 4, 000
- 14 VISTOR SEATING - 1,000
- 15 PHASE 3 - NEW KITCHEN, CL&I AND FINE ART ADDITION
- 16 FUTURE ADDITIONS
- 17 BAND PRACTICE LOT
- 18 BAND TOWER

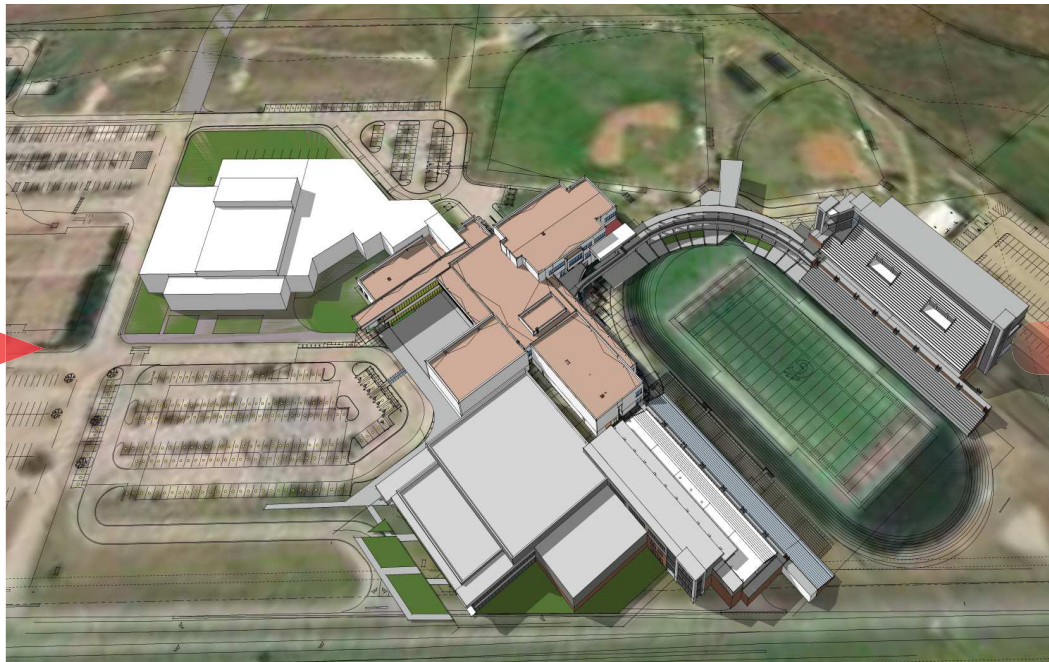
LINE TYPE LEGEND

- NEW BUILDING
- PROPERTY LINE
- TORNADO SHELTER

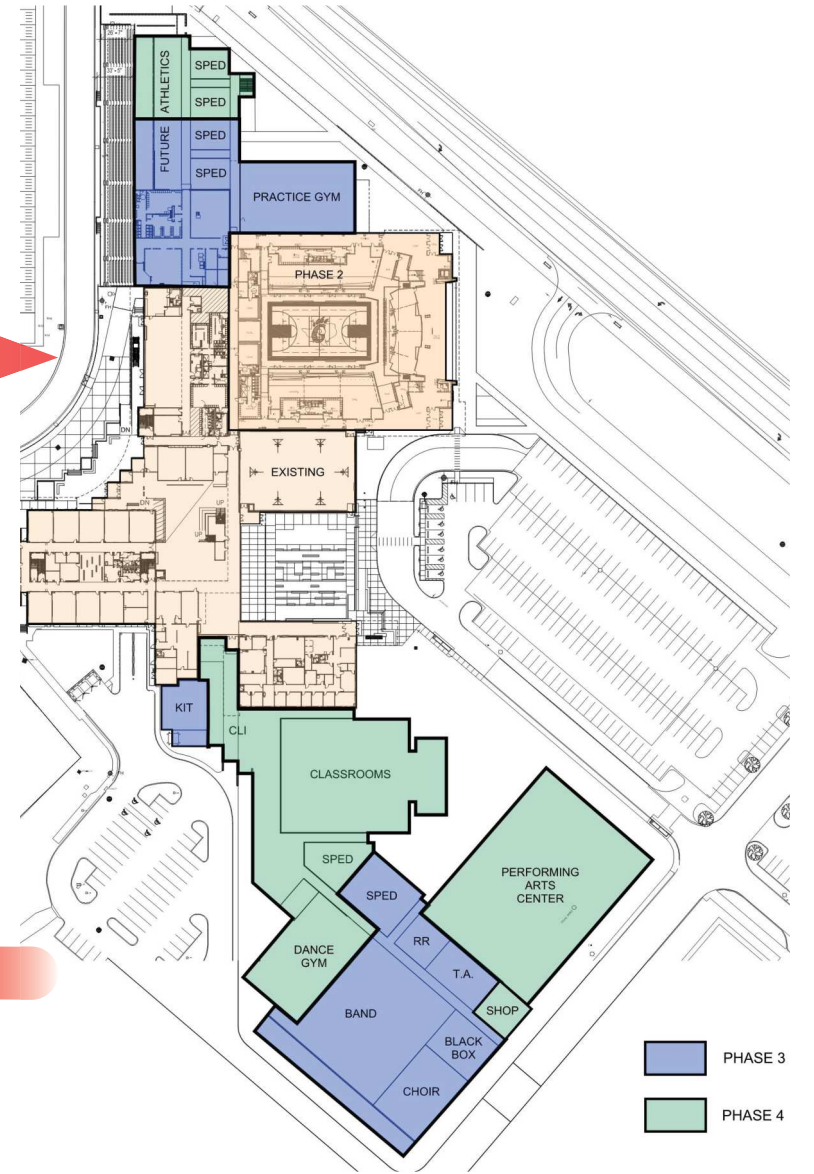




2015 MASTER PLAN



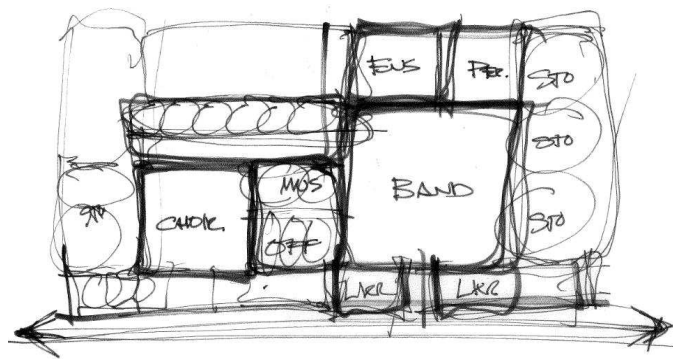
MASTER PLANNING - 2020 UPDATE



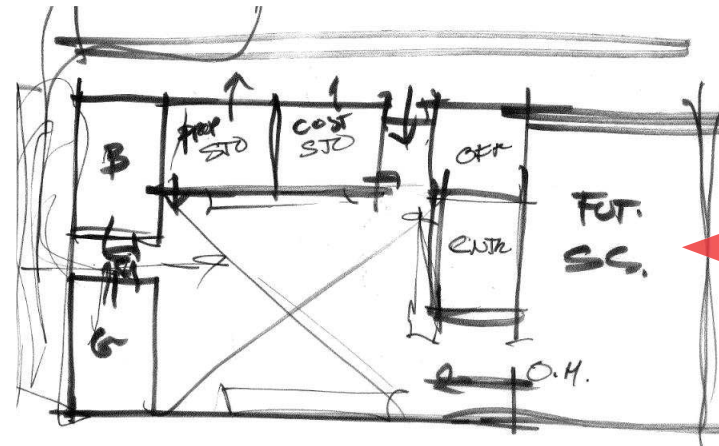
PHASE 3 & 4 DEVELOPMENT



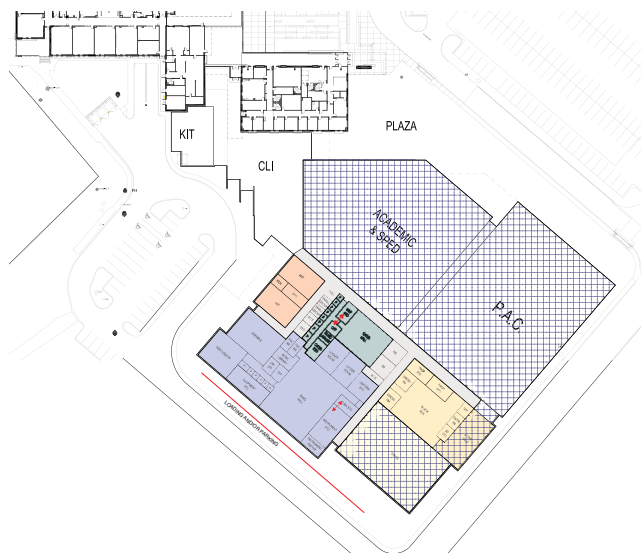
CONCEPTUAL IMAGES



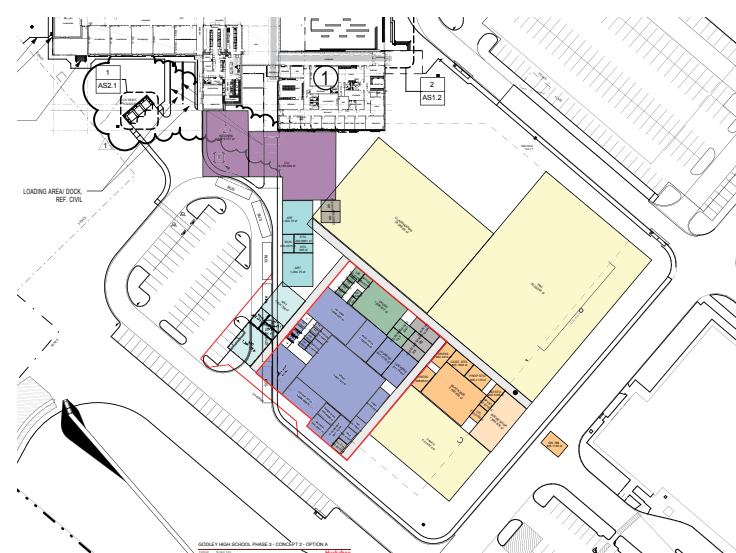
CONCEPTUAL IMAGES



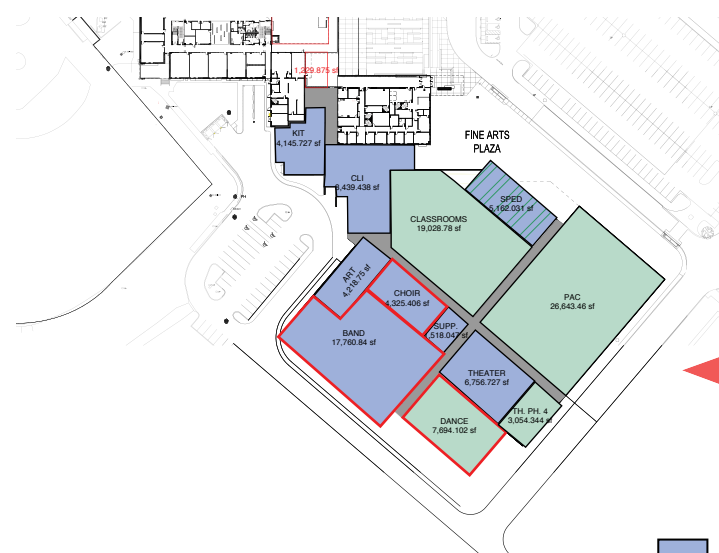
CONCEPTUAL IMAGES



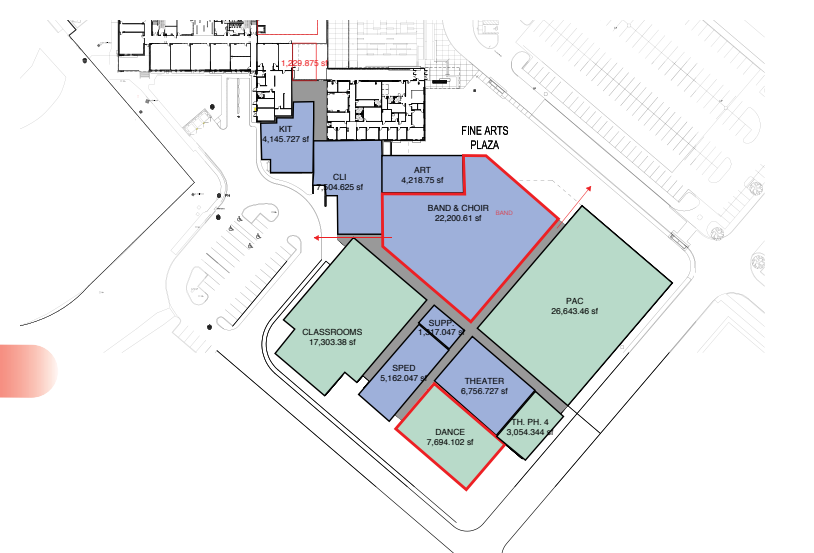
NEW PHASE 3 CONCEPT SKETCH



CONCEPTUAL SKETCHES



CONCEPTUAL SKETCHES



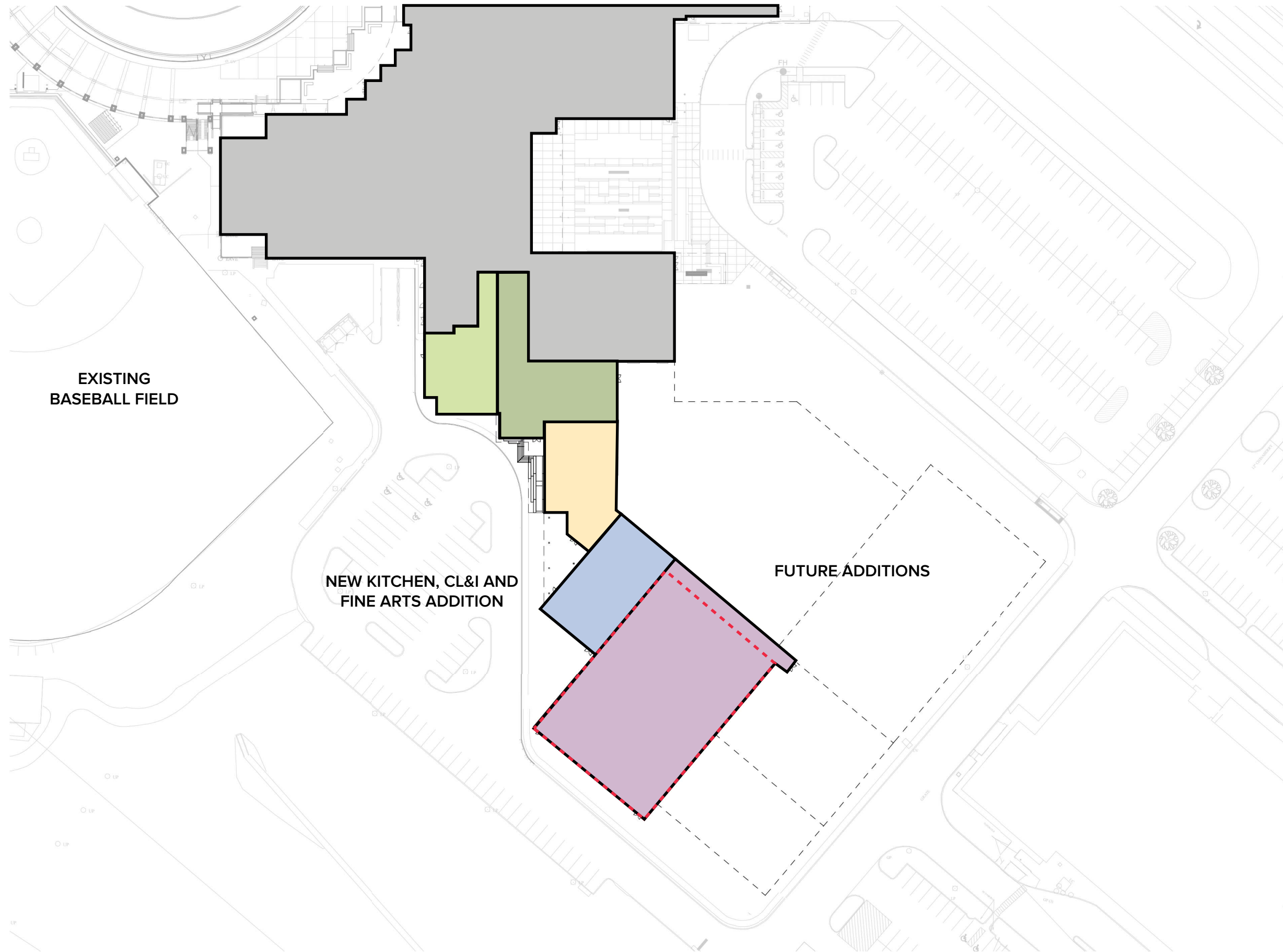
CONCEPTUAL SKETCHES

Huckabee

GODLEY HIGH SCHOOL PHASE 3 | GODLEY INDEPENDENT SCHOOL DISTRICT

NOT FOR REGULATORY APPROVAL, PERMITTING OR CONSTRUCTION. AUBREY M. SLAYBAUGH - TX 23,077

CONCEPTUAL PROCESS



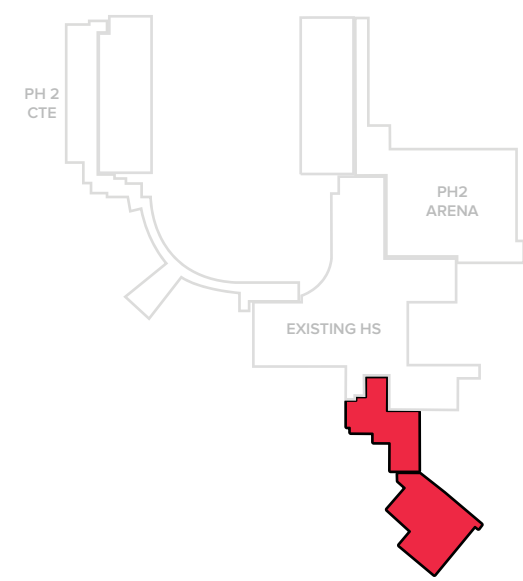
COLOR LEGEND

- BAND
- BAND SUPPORT
- CHOIR
- CHOIR SUPPORT
- DINING
- KITCHEN
- FINE ARTS
- FINE ARTS SUPPORT
- CIRCULATION
- RESTROOMS/SUPPORT SPACES

LINE TYPE LEGEND

- TORNADO SHELTER

KEY PLAN





GODLEY INDEPENDENT SCHOOL DISTRICT GODLEY HIGH SCHOOL PHASE 3



CAMPUS BIRDSEYE VIEW

Huckabee

GODLEY HIGH SCHOOL PHASE 3 | GODLEY INDEPENDENT SCHOOL DISTRICT

NOT FOR REGULATORY APPROVAL, PERMITTING OR CONSTRUCTION. AUBREY M. SLAYBAUGH - TX 23,077

PERSPECTIVES 7.1



GODLEY INDEPENDENT SCHOOL DISTRICT GODLEY HIGH SCHOOL PHASE 3



CL&I / FINE ARTS ADDITION WITH SHELTER

Huckabee

GODLEY HIGH SCHOOL PHASE 3 | GODLEY INDEPENDENT SCHOOL DISTRICT

NOT FOR REGULATORY APPROVAL, PERMITTING OR CONSTRUCTION. AUBREY M. SLAYBAUGH - TX 23,077

PERSPECTIVES 7.2



GODLEY INDEPENDENT SCHOOL DISTRICT GODLEY HIGH SCHOOL PHASE 3



KITCHEN AND CL&I ADDITION - BUS DROP-OFF

Huckabee

GODLEY HIGH SCHOOL PHASE 3 | GODLEY INDEPENDENT SCHOOL DISTRICT

NOT FOR REGULATORY APPROVAL, PERMITTING OR CONSTRUCTION. AUBREY M. SLAYBAUGH - TX 23,077

PERSPECTIVES 7.3



GODLEY INDEPENDENT SCHOOL DISTRICT
GODLEY HIGH SCHOOL PHASE 3



KITCHEN AND CL&I ADDITION - BUS DROP-OFF

Huckabee

GODLEY HIGH SCHOOL PHASE 3 | GODLEY INDEPENDENT SCHOOL DISTRICT

NOT FOR REGULATORY APPROVAL, PERMITTING OR CONSTRUCTION. AUBREY M. SLAYBAUGH - TX 23,077

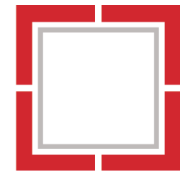
PERSPECTIVES 7.4



GODLEY INDEPENDENT SCHOOL DISTRICT

GODLEY HIGH SCHOOL PHASE 3

MASTER SCHEDULE	2022												2023												2024							
	Mar.	Apr.	May	June	July	Aug	Sept.	Oct.	Nov.	Dec.	Jan.	Feb.	Mar.	Apr.	May	June	July	Aug	Sept.	Oct.	Nov.	Dec.	Jan.	Feb.	Mar.	Apr.	May	June	July			
Schematic Design	SD COMPLETE 04.25.22																															
Design Development	DD COMPLETE 07.25.22																															
Construction Documents	SIGN & SEAL 10.24.22																															
Jurisdictional Review	RECEIVE PERMIT 11.23.2022																															
Bidding	BOARD AWARD 12.12.22																											SUBSTANTIAL COMPLETION 12.18.23				
Construction Observation Services																																



MORE THAN ARCHITECTS