

GODLEY INDEPENDENT SCHOOL DISTRICT
GODLEY HIGH SCHOOL - PHASE THREE

JULY 21, 2022

DESIGN DEVELOPMENT PRESENTATION



ACKNOWLEDGMENTS	01
NARRATIVE	02
PROGRAM	03
SITE PLANS	04
FLOOR PLANS (REDACTED)	05
PERSPECTIVES	06
SCHEDULE	07



GODLEY INDEPENDENT SCHOOL DISTRICT GODLEY HIGH SCHOOL PHASE 3



DISTRICT BOARD OF TRUSTEES

Matt McKittrick	Board President
Dennis McFarlin	Board Vice President
Craig Stevenson	Board Secretary
Marissa Abbott	Board Member
Terrie Goodloe	Board Member
Christa Heiner	Board Member
Greg L. Miller	Board Member

GODLEY ISD DESIGN TEAM

Dr. Rich Dear	Superintendent
Jason Karnes	Assistant Superintendent
Airemy Caudle	Chief Academic Officer
Joe Walker	Fine Arts Director
Kurtis Flood	Principal, Godley High School
Lacey Manuel	Child Nutrition Director

PROJECT TEAM

Aubrey Slaybaugh, AIA, LEED AP
Principal, Huckabee

Casey Casstevens, AIA, RID
Director of Design,
Fort Worth, Huckabee

Brian Green, AIA
Project Architect, Huckabee

Lauren Hoyle, RID
Interior Designer, Huckabee

Jenna Norton, AIA
Planning, Huckabee

Adolfo Gonzalez
Architectural Associate, Huckabee

Jennifer Hay
Architectural Associate, Huckabee

Megan Patterson
Interior Design Associate,
Huckabee

CIVIL ENGINEERING & LANDSCAPE ARCHITECTURE

Langan Engineering
Dallas, TX

STRUCTURAL ENGINEERING

Huckabee
Fort Worth, TX

MEP ENGINEERING

Romine, Romine and Burgess
Fort Worth, TX

TECHNOLOGY

True North Consulting Group
Waco, TX

FOOD SERVICE

JMK Food Service Consulting & Design
Rowlett, TX

BUILDING ENVELOPE

Engineered Exteriors
Austin, TX

ACOUSTICIAN

BAI
Dallas, TX



GODLEY INDEPENDENT SCHOOL DISTRICT

GODLEY HIGH SCHOOL PHASE 3

INTRODUCTION

On May 1, 2021, Godley ISD passed a \$168,500,000 bond package, which includes phases 2 and 3 of Godley High School. Phase 2, the CTE and Athletics additions, are currently under construction. Phase 3 is focused on bringing fine arts spaces, currently located at and shared with the adjacent middle school campus onto the high school campus, which will allow for growth at both campuses. This addition will also include an expansion of the kitchen and CL&I.

DESIGN PROCESS

Huckabee met with district administration and fine arts staff and reviewed the current fine arts spaces at Godley Middle School, discussing what works well and what could be improved or modified for the high school design. A design charrette was held at the high school, allowing staff to participate in creating options for the layout of these areas. Huckabee also met with Child Nutrition Services to discuss needs for the kitchen expansion to meet the growth expectations of the campus.

SITE

While portions of the high school master plan have been modified over time, the location of the fine arts addition has remained consistent. This portion of the building will be located over the existing practice fields to the south of the main entrance. Through discussions with the district, careful consideration has been given about the overall master plan for Godley High School and how future phases will integrate into phase 3. Future phases in proximity to the fine arts addition will include another classroom wing, special education classrooms, theater, dance, and a performing arts center.

There will be minor site adjustments to accommodate this addition, including a loading area and a few additional parking spaces. The practice fields will be relocated to an area on the south side of the creek, accessible by the new driveway that will be constructed as part of phase 2.

CL&I AND KITCHEN EXPANSION

Phase 3 includes expanding the kitchen to ultimately serve 2,500 students. This includes additional freezer and cooler space, prep space, and serving lines. The Center for Learning and Innovation (CL&I) will almost double in size, providing additional dining and collaboration space to serve 2,000 students. The master plan includes another CL&I expansion to support 2,500 total students. These spaces will tie into the existing kitchen and CL&I.

FINE ARTS ADDITION

The fine arts addition extends south from the expanded CL&I and includes two visual art labs, a new choir suite, and a new band suite. The visual art labs are next to the CL&I and near an indoor and outdoor collaboration space. These adjacencies provide creative opportunities to work on, present, and display projects beyond the classrooms. There is shell space above these classrooms for two additional art labs to be completed in a future phase.

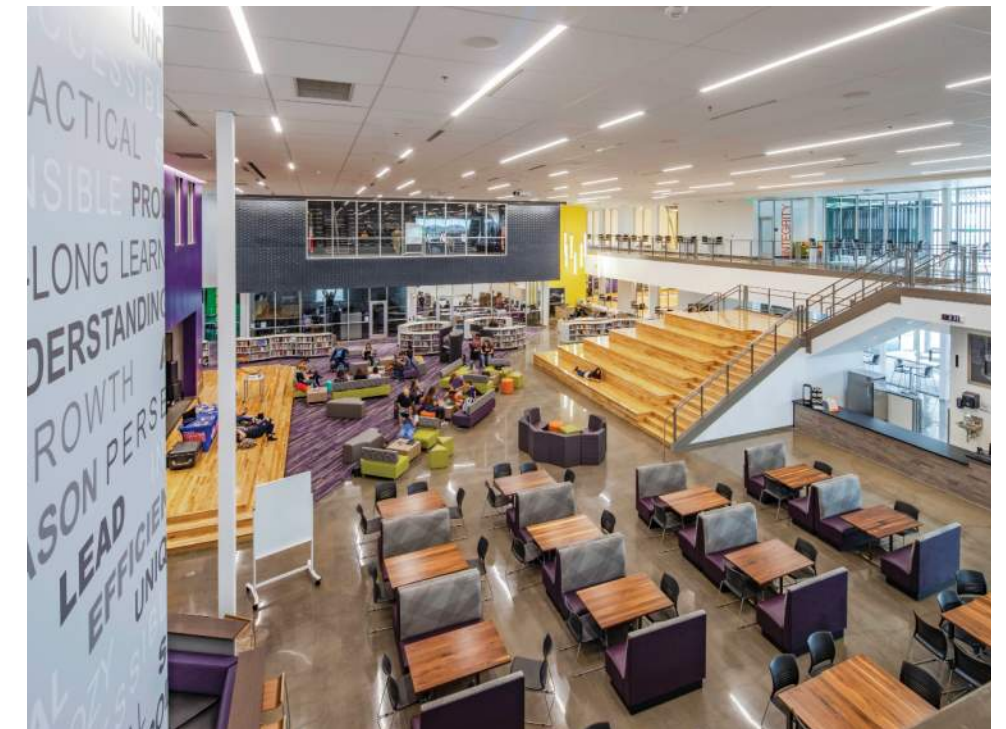
The new choir suite includes a rehearsal space for 50 students, storage spaces, an office, and access to shared practice rooms with band. The choir hall will be shared with theater temporarily until a future addition provides designated spaces for the theater program. The band hall and accessory spaces are similar in number and size to Godley Middle School with two additional rehearsal spaces for large ensembles and percussion. The band hall will serve 150 students, the large ensemble space 65 students, and the percussion space 30 students. The band suite will also serve as the code-required tornado shelter for the entire campus. In future additions, as the campus population grows, the extent of the tornado shelter will also have to be increased.

EXTERIOR

To create a cohesive overall design, the new additions will take on the same materiality as is on the existing building today. This consists of brick and metal profile wall panels. As a part of this Phase 3 design, the planning of future addition(s) was kept in mind. Because of that, the wall construction, materials used, and openings created in this wall are intentional to allow the future additions to be integrated with minimal impact and rework. Most of the windows can be repurposed into the future phases.

SCHEDULE

Construction will start in December 2022 and be complete in December 2023. The building will be operational for the spring semester beginning in January 2024.

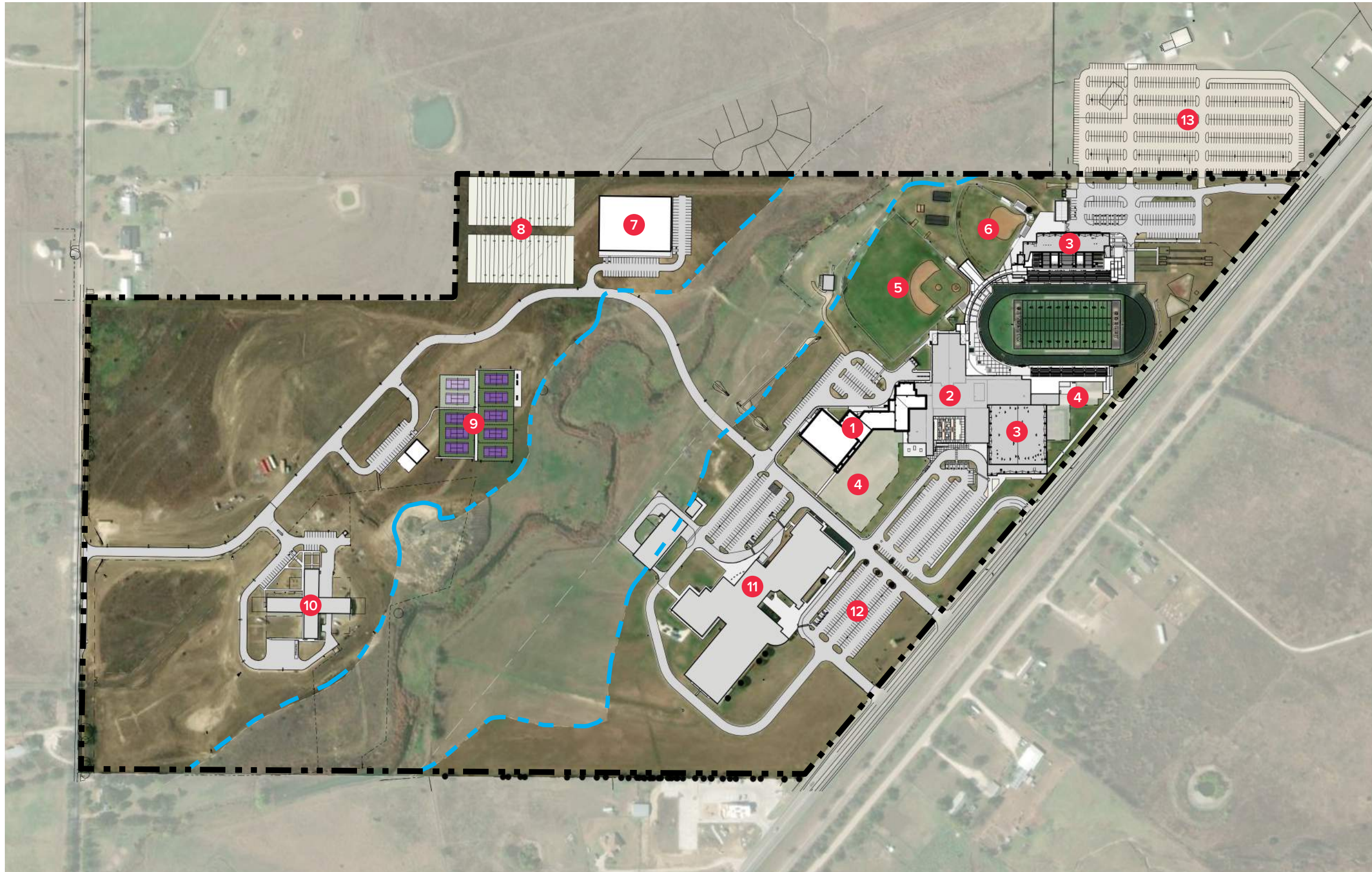


GODLEY HIGH SCHOOL - CL&I

Godley High School Fine Arts Addition - PHASE 3							
Program of Requirements							
# of spaces	Area per space (S.F.)	Net Area (S.F.)	Actual area per space (S.F.)	Actual Net Area (S.F.)	# Students Max Capacity	Remarks	
Visual Arts							
Art Labs	2	1,200	2,400	1,285	2,570	50	provide an outdoor art courtyard, windows into art labs preferred to have north facing light. Multiple sinks in lab with plaster traps
Art Storage	2	200	400	370	370		access from within the art lab
Kiln	1	300	300	190	190		Locate between Art Labs
Plan space for 2 to 3 additional Art Labs in future addition							
Choir							
Rehearsal Room	1	1,800	1,800	1,913	1,913	25	designed for 50 choral students, portable risers to be used provide flat floor in the room
Uniform Storage	1	250	250	256	256		
Music Library	1	150	150	146	146		
Office	1	150	150	189	189		
General Storage	1	250	250	256	256		
Practice Rooms - Small	6	48	288	58	348		Wenger type
Band Hall - This space to be the tornado shelter for the campus (and other Fine Arts rooms as needed for the occupant load of the shelter)							
Main Rehearsal Hall	1	4,600	4,600	4,620	4,620	25	designed for 150 students @ 30sf ea.
Percussion Stor/Rehearsal	1	1,500	1,500	1,516	1,516		designed for 30 students with percussion storage
Large Ensemble Room	1	1,950	1,950	1,975	1,975		designed for 65 students @ 30sf ea.
Uniform Storage	1	600	600	360	360		total LF of hanging and shelving storage will be equal to middle school
Instrument Storage	1	1,000	1,000	934	934		
Tuba Storage	1	320	320	339	339		
Office	1	180	180	185	185		For 3 people, Adjacent to Director Office, connection to hallway
Director Office	1	200	200	185	185		
Music Library	1	400	400	395	395		
Prop/Equipment Storage/Color Guard Storage	1	1,000	1,000	977	977		exterior access to marching field
Instrument Repair	1	300	300	293	293		
Practice Rooms - Small	6	48	288	58	348		Wenger type, locate adjacent to Choir Practice Rooms
Practice Rooms - Large	2	80	160	101	202		Wenger type
Student Locker Rooms (Men & Women)	2	800	1,600	637	1,274		changing rooms double as large practice rooms, provide necessary acoustic treatment. Double tier lockers-70 in each
Faculty Locker Rooms	2	175	350	188	376		dressing area, shower & w.c. area. Access from Music Library
Shelter Control Room	1	125	125	130	130		
Shelter Restrooms	0	50	0	0	0		see restrooms in Fine Arts area to be included in the shelter
Shelter Mech Room	1	100	100	200	200		mezzanine near control room
General Support							
Multi-User Restroom - Boys	1	250	250	260	260		
Multi-User Restroom - Girls	1	250	250	260	260		
Custodial	1	50	50	90	90		
MEP	1	50	50	192	192		
IDF	1	100	100	90	90		
General Storage	1	150	150	0	0		
SUBTOTAL NET AREA(s.f.)			21,511		21,439	100	
Walls & Circulation		35%	7,529	45%	9,740		
TOTAL GROSS AREA(s.f.)			29,040		31,179	75	Functional Capacity @ 75% of Max Capacity

Godley High School Core Addition - PHASE 3							
# of spaces	Area per space (S.F.)	Net Area (S.F.)	Actual area per space (S.F.)	Actual Net Area (S.F.)	# Students Max Capacity	Remarks	
CL&I & Kitchen Addition							
Additional Kitchen space			3,500	4,240	4,240		Total kitchen to serve 2,500 students
CLI expansion			5,000	4,649	4,649		Total CL&I to serve 2,000 students (further expansion required for 2,500 students and is planned in current master plan)
Collaboration area				756	756		
SUBTOTAL NET AREA(s.f.)			8,500		8,889		
Walls & Circulation		20%	1,700	22%	1,954		
TOTAL GROSS AREA(s.f.)			10,200		10,843	0	Functional Capacity @ 75% of Max Capacity




SUBTOTAL FINE ARTS ADDITION			29,040		31,179	100	
SUBTOTAL CL&I ADDITION			10,200		10,843	0	
SECOND FLOOR SHELL SPACE					5,040	0	2 future art labs
TOTAL GROSS AREA			39,240		47,062	100	



SITE PLAN KEY

- 1 PHASE 3 - NEW KITCHEN, CL&I AND FINE ARTS ADDITION
- 2 EXISTING HIGH SCHOOL
- 3 PHASE 2 HIGH SCHOOL ADDITION
- 4 FUTURE ADDITION
- 5 EXISTING BASEBALL FIELD
- 6 EXISTING SOFTBALL FIELD
- 7 FUTURE PRACTICE FACILITY
- 8 NEW PRACTICE FIELDS
- 9 8 TENNIS COURTS AND 2 FUTURE COURTS
- 10 EXISTING AG FACILITY
- 11 EXISTING MIDDLE SCHOOL
- 12 BAND PRACTICE LOT
- 13 NEW PARKING LOT

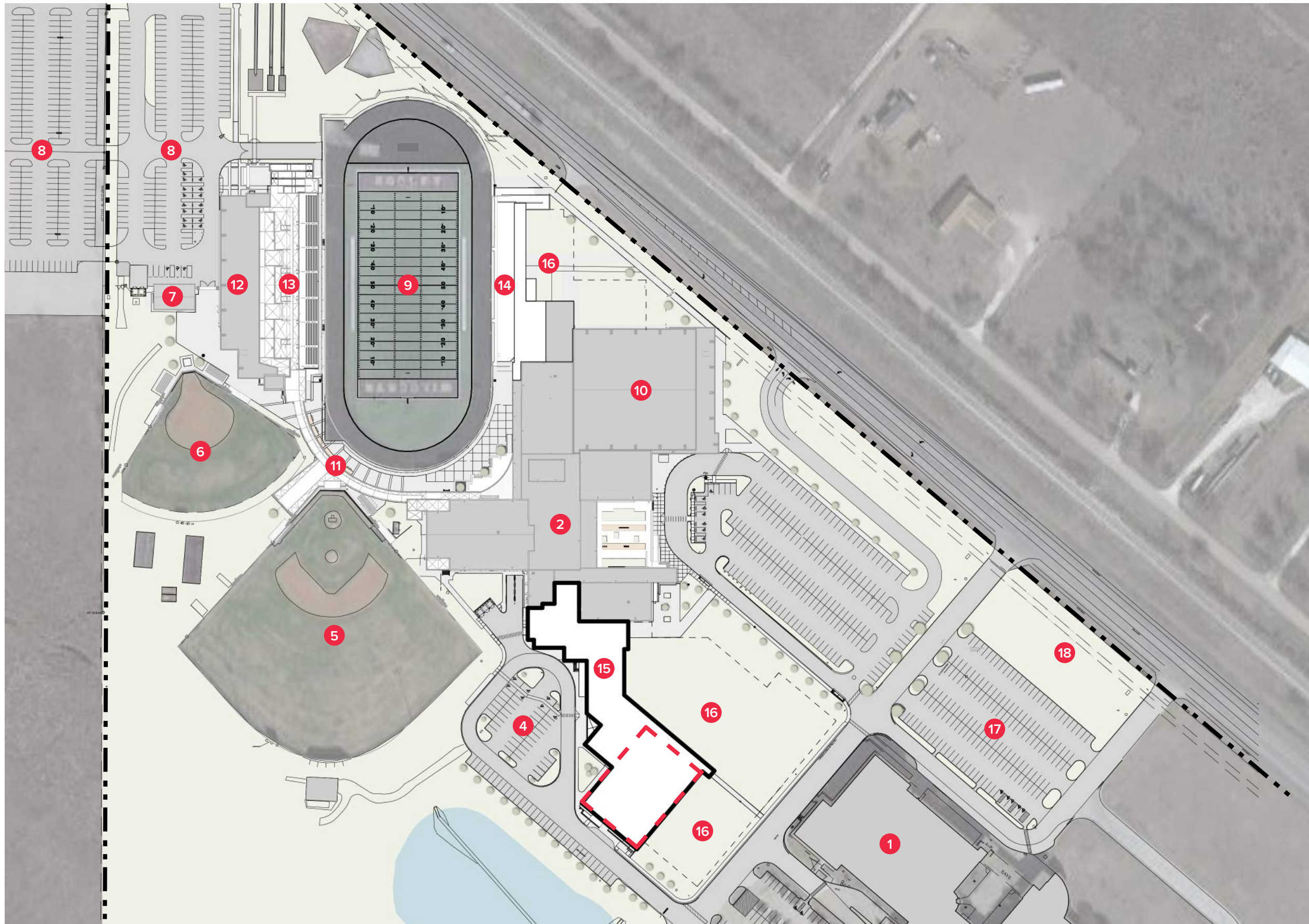
LINE TYPE LEGEND

-  NEW BUILDING
-  PROPERTY LINE
-  FLOOD PLAIN



NORTH





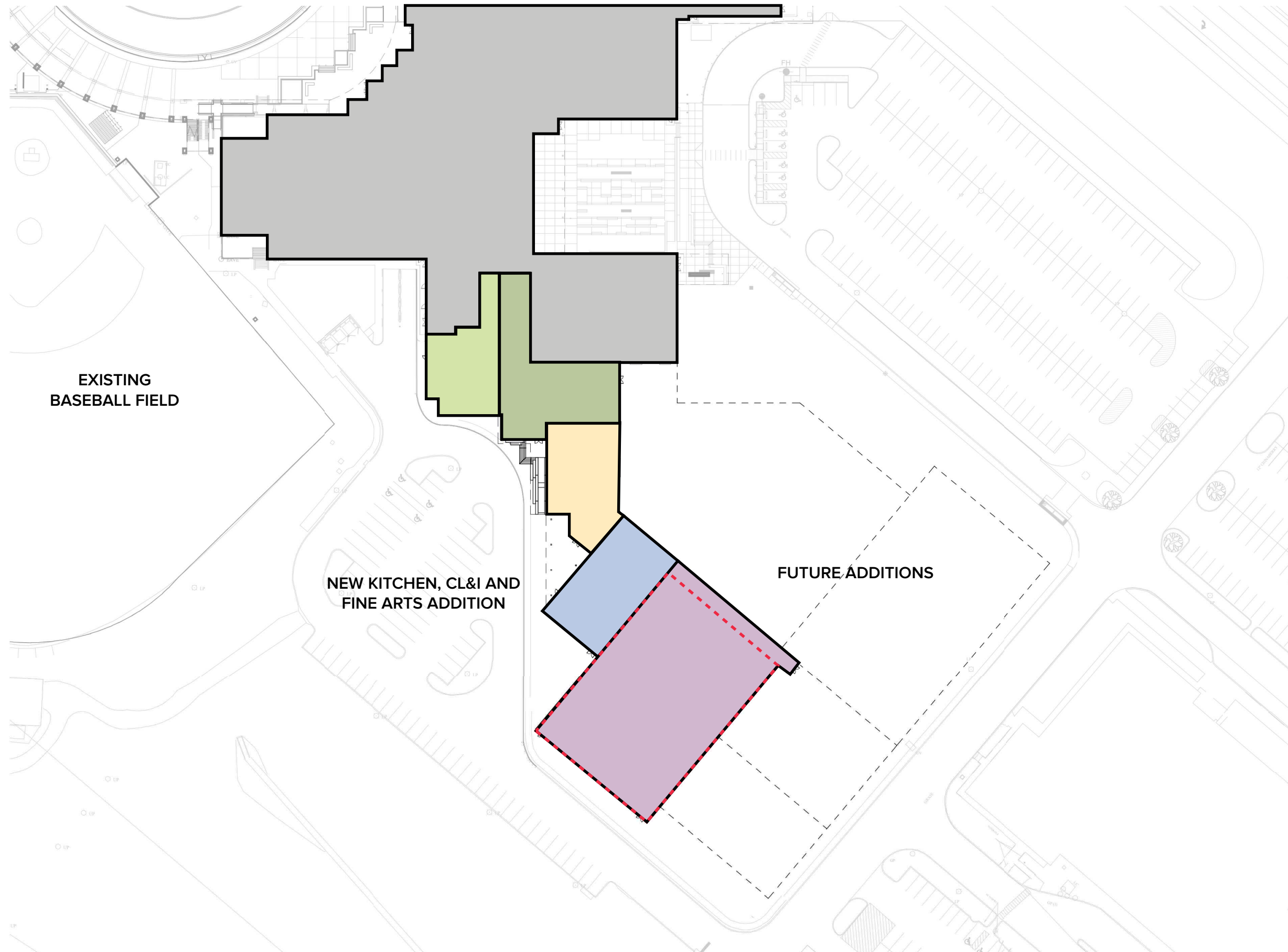
SITE PLAN KEY

- 1 EXISTING MIDDLE SCHOOL
- 2 EXISTING HIGH SCHOOL
- 3 EXISTING VISTOR/STUDENT PARKING
- 4 EXISTING STAFF PARKING
- 5 EXISTING BASEBALL FIELD
- 6 EXISTING SOFTBALL FIELD
- 7 EXISTING LOCKER ROOMS
- 8 STADIUM/FIELDS PARKING
- 9 EXISTING FOOTBALL FIELD/ TRACK
- 10 PHASE 2 ARENA AND CLASSROOM ADDITION
- 11 PHASE 2 WALKWAY ADDITION
- 12 PHASE 2 CTE ADDITION
- 13 HOME SEATING - 4, 000
- 14 VISTOR SEATING - 1,600
- 15 PHASE 3 - NEW KITCHEN, CL&I AND FINE ART ADDITION
- 16 FUTURE ADDITIONS
- 17 BAND PRACTICE LOT
- 18 BAND TOWER

LINE TYPE LEGEND

- NEW BUILDING
- PROPERTY LINE
- TORNADO SHELTER





EXISTING
BASEBALL FIELD

NEW KITCHEN, CL&I AND
FINE ARTS ADDITION

FUTURE ADDITIONS

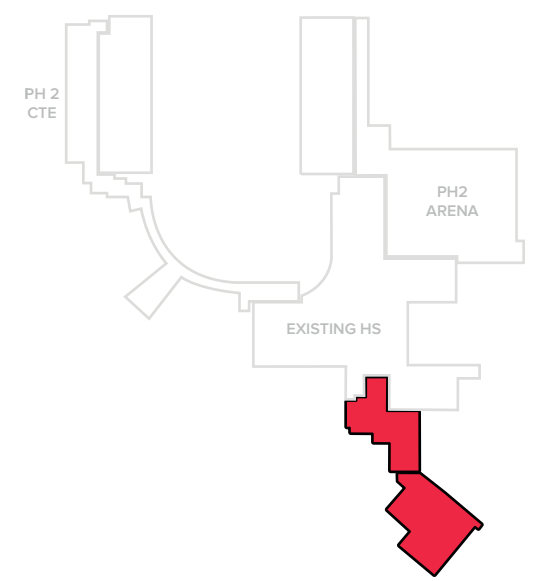
COLOR LEGEND

- BAND
- BAND SUPPORT
- CHOIR
- CHOIR SUPPORT
- DINING
- KITCHEN
- FINE ARTS
- FINE ARTS SUPPORT
- CIRCULATION
- RESTROOMS/SUPPORT SPACES

LINE TYPE LEGEND

- TORNADO SHELTER

KEY PLAN





GODLEY INDEPENDENT SCHOOL DISTRICT GODLEY HIGH SCHOOL PHASE 3



OVERALL CAMPUS BIRDSEYE VIEW

Huckabee

GODLEY HIGH SCHOOL PHASE 3 | GODLEY INDEPENDENT SCHOOL DISTRICT

NOT FOR REGULATORY APPROVAL, PERMITTING OR CONSTRUCTION. AUBREY M. SLAYBAUGH - TX 23,077

PERSPECTIVES 6.1



GODLEY INDEPENDENT SCHOOL DISTRICT
GODLEY HIGH SCHOOL PHASE 3



CL&I / FINE ARTS ADDITION WITH SHELTER

Huckabee

GODLEY HIGH SCHOOL PHASE 3 | GODLEY INDEPENDENT SCHOOL DISTRICT

NOT FOR REGULATORY APPROVAL, PERMITTING OR CONSTRUCTION. AUBREY M. SLAYBAUGH - TX 23,077

PERSPECTIVES 6.2



GODLEY INDEPENDENT SCHOOL DISTRICT GODLEY HIGH SCHOOL PHASE 3



CL&I / FINE ARTS ADDITION WITH SHELTER

Huckabee

GODLEY HIGH SCHOOL PHASE 3 | GODLEY INDEPENDENT SCHOOL DISTRICT

NOT FOR REGULATORY APPROVAL, PERMITTING OR CONSTRUCTION. AUBREY M. SLAYBAUGH - TX 23,077

PERSPECTIVES 6.3



GODLEY INDEPENDENT SCHOOL DISTRICT GODLEY HIGH SCHOOL PHASE 3



KITCHEN AND CL&I ADDITION - BUS DROP-OFF

Huckabee

GODLEY HIGH SCHOOL PHASE 3 | GODLEY INDEPENDENT SCHOOL DISTRICT

NOT FOR REGULATORY APPROVAL, PERMITTING OR CONSTRUCTION. AUBREY M. SLAYBAUGH - TX 23,077

PERSPECTIVES 6.4



GODLEY INDEPENDENT SCHOOL DISTRICT GODLEY HIGH SCHOOL PHASE 3



CL&I / KITCHEN ADDITION

Huckabee

GODLEY HIGH SCHOOL PHASE 3 | GODLEY INDEPENDENT SCHOOL DISTRICT

NOT FOR REGULATORY APPROVAL, PERMITTING OR CONSTRUCTION. AUBREY M. SLAYBAUGH - TX 23,077

PERSPECTIVES 6.5



GODLEY INDEPENDENT SCHOOL DISTRICT GODLEY HIGH SCHOOL PHASE 3



CL&I ADDITION - MAIN PRESENTATION

Huckabee

GODLEY HIGH SCHOOL PHASE 3 | GODLEY INDEPENDENT SCHOOL DISTRICT

NOT FOR REGULATORY APPROVAL, PERMITTING OR CONSTRUCTION. AUBREY M. SLAYBAUGH - TX 23,077

PERSPECTIVES 6.6



GODLEY INDEPENDENT SCHOOL DISTRICT GODLEY HIGH SCHOOL PHASE 3



CL&I ADDITION - MAIN PRESENTATION

Huckabee

GODLEY HIGH SCHOOL PHASE 3 | GODLEY INDEPENDENT SCHOOL DISTRICT

NOT FOR REGULATORY APPROVAL, PERMITTING OR CONSTRUCTION. AUBREY M. SLAYBAUGH - TX 23,077

PERSPECTIVES 6.7



GODLEY INDEPENDENT SCHOOL DISTRICT
GODLEY HIGH SCHOOL PHASE 3



FINE ARTS - COLLAB

Huckabee

GODLEY HIGH SCHOOL PHASE 3 | GODLEY INDEPENDENT SCHOOL DISTRICT

NOT FOR REGULATORY APPROVAL, PERMITTING OR CONSTRUCTION. AUBREY M. SLAYBAUGH - TX 23,077

PERSPECTIVES 6.8



GODLEY INDEPENDENT SCHOOL DISTRICT

GODLEY HIGH SCHOOL PHASE 3

MASTER SCHEDULE	2022												2023												2024							
	Mar.	Apr.	May	June	July	Aug	Sept.	Oct.	Nov.	Dec.	Jan.	Feb.	Mar.	Apr.	May	June	July	Aug	Sept.	Oct.	Nov.	Dec.	Jan.	Feb.	Mar.	Apr.	May	June	July			
Schematic Design	SD COMPLETE 04.25.22																															
Design Development	DD COMPLETE 07.21.22																															
Construction Documents	SIGN & SEAL 10.24.22																															
Jurisdictional Review	RECEIVE PERMIT 11.23.2022																															
Bidding	BOARD AWARD 12.12.22																									SUBSTANTIAL COMPLETION 12.18.23						
Construction Observation Services																																



MORE THAN ARCHITECTS