

GODLEY INDEPENDENT SCHOOL DISTRICT
GODLEY HIGH SCHOOL - PHASE TWO

March, 29, 2021

SCHEMATIC DESIGN PRESENTATION



ACKNOWLEDGMENTS	01
NARRATIVE	02
PROGRAM	03
SITE PLANS	04
CONCEPTUAL PROCESS	05
FLOOR (REDACTED) PLANS	06
BUILDING SECTIONS	07
PRECEDENT IMAGES	08
PERSPECTIVES	09
SCHEDULE	10



GODLEY INDEPENDENT SCHOOL DISTRICT GODLEY HIGH SCHOOL PHASE 2

DISTRICT BOARD OF TRUSTEES

Matt McKittrick	Board President
Dennis McFarlin	Board Vice President
Craig Stevenson	Board Secretary
Marissa Abbott	Board Member
Terrie Goodloe	Board Member
Christa Heiner	Board Member
Greg L. Miller	Board Member

GODLEY ISD DESIGN TEAM

Dr. Rich Dear	Superintendent
Jason Karnes	Assistant Superintendent
Airemy Caudle	Learning Design & Curation Director
Cheryl Villanueva	College & Career Readiness Director
Kurtis Flood	Principal, Godley High School

PROJECT TEAM

Daren Kirbo, AIA
Principal, Huckabee

Aubrey Slaybaugh, AIA, LEED AP
Associate Principal, Huckabee

Casey Casstevens, AIA, RID
Director of Design,
Fort Worth, Huckabee

Brian Green, AIA
Project Architect, Huckabee

Lauren Hoyle, RID
Interior Designer, Huckabee

Mike King, AIA
Planning, Huckabee

Adolfo Gonzalez
Architectural Associate, Huckabee

Laura Miranda
Architectural Associate, Huckabee

Megan Patterson
Interior Design Associate,
Huckabee

CIVIL ENGINEERING & LANDSCAPE ARCHITECTURE

Adams Consulting Engineering
Dallas, TX

STRUCTURAL ENGINEERING

Huckabee
Fort Worth, TX

MEP ENGINEERING

Romine, Romine and Burgess
Fort Worth, TX

TECHNOLOGY

True North Consulting Group
Waco, TX

FOOD SERVICE

JMK Food Service Consulting & Design
Rowlett, TX

SPORTS DESIGN

Sports Design Group
McKinney, TX





GODLEY INDEPENDENT SCHOOL DISTRICT

GODLEY HIGH SCHOOL PHASE 2

INTRODUCTION

In anticipation of a bond election in May 2021, phase 2 of Godley High School is being planned to accommodate district and campus growth. Design started prior to the bond election to save in construction escalation costs, to secure a more competitive bid window, and to open the facility a year sooner. This multi-faceted addition will increase the campus capacity by 460 students, totaling approximately 1,160.

DESIGN PROCESS

Once the District, Board of Trustees, and Facilities Planning Committee agreed that an addition at the high school was needed to address capacity in the district, a design committee was formed that included district administration and the campus principal and staff. Some committee members went on tours of comparable facilities. Huckabee also conducted a design charrette with the full committee to discuss the overall adjacencies and layout of the building. Following this, there have been bi-weekly project meetings to continue to advance the progress of the design.



TOUR - CLEBURNE HIGH SCHOOL CTE

SITE

Over the past two years, the master plan for the high school and middle school site has been re-evaluated and updated, reflecting the intent to continue to wrap the high school around the existing stadium so that the stadium can be better utilized outside of football games and track events. The additions in this phase include a four-story Career and Technical Education (CTE) addition on the home side of the stadium, a connecting two-story walkway between that addition and the current high school's academic wing, and a three-story athletics and academic addition on the visitor's side of the stadium that will attach to the existing athletics wing of the high school.

Because of the athletics addition, the existing tennis courts will need to be relocated and replaced. Ten lit courts are being designed south of the creek near the new Agricultural Project Center. These will be designed into a berm that can be utilized for seating.

Other site improvements include new and expanded stadium seating, accommodating 6,500 spectators with a master planned capacity of 8,000. The track will be replaced to become a fire lane with a track surface. The football synthetic turf is at the end of its life cycle and will also be replaced.

A new row of parking will be provided in front of the middle school. Additional parking to support the high school and stadium is budgeted within the project, the location is being evaluated.

Another important part of the master plan is to connect the main campus north of the creek to the Ag and tennis programs located south of the creek. Adding a driveway across the creek involves a FEMA flood plain study and a state approved flood plain revision. This will be incorporated into the project if bonding capacity is sufficient.

CTE AND HOME STADIUM ADDITION

The four-story Career and Technical Education addition on the home side of the stadium will allow growth for several programs, increasing certification options for students and freeing up the high school for additional core classroom use. This 230-student addition includes classrooms and labs for IT/Computer Science, including district IT offices, Health Science, Hospitality, Engineering and Architecture, Audio-Video Technology, Business Entrepreneurship, and Education. There will also be two labs accessible from the main lobby allocated for future public partnerships. Depending on bonding capacity, some of these programs may be shelved until additional funds become available to fully finish out these spaces.

It is important to GISD administration that the stadium does not sit idle during the week. This space has been activated by integrating the CTE spaces into the stadium bleachers at three different levels. The second floor of the CTE wing will have dual-use restrooms and hospitality areas for both student and stadium use. Students will have direct access to the stadium concourse to use as extended instructional and project space. The third floor of the CTE has collaboration areas for health science students that reach into the bleachers. There are also plans to provide desks and power to sections of the bleachers at this level for outdoor classrooms. The fourth floor AV spaces will be multi-purpose, with AV equipment and collaborative spaces set up for both the AV program and the stadium production needs. Additionally, there are other shared restrooms and hospitality areas on the first floor to support the baseball and softball fields.

The stadium home bleachers will accommodate approximately 4,000 spectators. The lower bowl will be aluminum grandstands, and the upper bowl will be a combination of aluminum bleachers and plastic seat-backs on a concrete structure created by the academic spaces below it. There will be a two-story exterior walkway connecting the high school to the CTE addition that will also provide more viewing space for football, baseball, and softball activities.



GODLEY INDEPENDENT SCHOOL DISTRICT

GODLEY HIGH SCHOOL PHASE 2

ACADEMIC/ATHLETICS AND VISITOR STADIUM ADDITION

The three-story addition on the visitor side of the stadium will include a competition arena, locker rooms, and core classrooms, adding more than 200 to the student capacity. The master plan includes an additional practice gym planned for the next phase that will also be a storm shelter. The arena will seat approximately 1,900 spectators. The 300 seats at the end of the court can be sectioned off by an operable partition to create a presentation room for daily use. At the other end, classrooms, collaboration spaces, and coaches' offices will overlook the court. The classrooms will be set up similarly to the CTE wing, integrated into the stadium bleachers with the same access to the concourse and upper-level collaboration spaces and outdoor classrooms. The stadium visitor bleachers will accommodate approximately 2,500 spectators. The lower bowl will be aluminum grandstands, and the upper bowl will be a combination of aluminum bleachers and plastic seat-backs on a concrete structure created by the academic spaces below it. The master plan will allow for more bleachers to be built above level 3 to match the height of the home side of the stadium with an eventual capacity of approximately 4,000 spectators.

EXTERIOR

The brick and metal panels used on the current high school will be extended to the campus additions so that the entire campus looks like one cohesive project. There will also be more purple louvers in distinct areas to tie the campus aesthetic together. Entry elements at the Arena are being designed to reflect the aesthetic of the Phase 1 entry and courtyard. The connection walkway will integrate into existing outdoor spaces and define new access points and viewing areas to the baseball, softball, and football fields. Wayfinding will be important for both the arena and stadium entrances.

FUNDING

All CTE, arena-focused athletics, and core classrooms will be funded by the May 2021 bond election, if successful (\$58.2m). All direct stadium and tennis costs will be funded from the remaining 2015 bond funds (\$4.6m). This prevents Godley ISD from having to call a separate bond proposition for athletics in the upcoming election required by recent legislation.

District bonding capacity is estimated to be between \$75m-\$100m in 2021. Depending on final values that will be received in July, aspects of the project are being prioritized and will continue to be evaluated as the project progresses. As previously mentioned, some CTE spaces may be shelled in only with plans to finish them out in a future phase. The creek crossing (additional \$1.1m) is another item that could be postponed if necessary.

SCHEDULE

Dependent on the success of a May 2021 bond election, construction will start in December 2021 and be completed in July 2023 for school to begin in August 2023. There will be multiple phases to construction. These phases are currently being evaluated by the Pre-Construction Manager and will be shared at a later date.



DISTRICT PLANNING SESSION

Godley ISD - Godley High School Additions						
December 15, 2020		Program of Requirements				
Godley High School Career Center		# of spaces	Area per space (S.F.)	Net Area (S.F.)	# Students Max Capacity	Remarks
CAREER CENTER						
HEALTH SCIENCES						
Health Sciences Mock Hospital Lab	1	1,650	1,650		mock hospital includes space for 4 hospital beds, mock nurse station, mock hospital restroom, foot pedal wash sink. Locate all Health Sci program on the 2nd floor.	
Mock Doctor's Office/Exam Rm	1	200	200		access from within the HS Mock Hospital Lab	
HS Lab Storage Room	1	150	150		access from within the HS Mock Hospital Lab	
Clinical Lab	1	1,650	1,650	25	multipurpose room for module instruction - vet med, dental, etc. share storage room with either Science Lab or HS Mock Lab	
Science Lab - Anatomy & Physiology	1	1,650	1,650	28	28 students max per TEA Standards	
Prep/Storage Room for Sci Lab	1	280	280		access from within the Science Lab - Anatomy/Physiology	
Health Science Classrooms	2	725	1,450	50		
Collaboration	1	700	700			
INFORMATION TECHNOLOGY - COMPUTER SCIENCES						
Computer Maintenance Lab	1	1,650	1,650	25	includes Chromebook repairing, Lab/Lecture furniture arrangement. Locate all IT program on the 2nd floor.	
Storage for Comp. Maint Lab	1	150	150		access from within the Computer Maintenance Lab	
Tech Dept Office Suite (for 6 persons)	1	750	750		open office suite for 8 desks. Adjacent to Comp.Maint Lab	
Conference Room	1	250	250		for Tech Dept meetings	
central receiving area	1	500	500		shared space	
Tech Storage	1	200	200			
HOSPITALITY						
Hospitality Classroom & Stadium Concessions	1	1,200	1,200	25	small commercial kitchen within the CR and 2 residential kitchen setups. Locate on the 1st floor. This space is to also be a concessions for the stadium	
Pantry/Storage	1	150	150		access from within Hospitality Classroom	
Multipurpose Room #1	1	1,500	1,500		view to FB field, Esports events, small banquets, etc. provide folding wall to divide the space equally. With outdoor deck, see MP room below regarding Press Box functions. Locate on 3rd floor.	
ENGINEERING						
Robotics/Drone Lab	1	1,500	1,500		locate on the 1st floor.	
Storage for Robotics Lab	1	250	250			
Architecture Lab (Shell-in for all spaces in the Arch program)	1	1,200	1,200		26 computer stations at perimeter of room, tables in center rm	
Printer Room	1	200	200		adjacent to Arch Lab	
Server Room	1	75	75		adjacent to Arch Lab	
Classroom	1	725	725		adjacent to Arch Lab	
Construction Lab	1	2,000	2,000		adjacent to Arch Lab	
AUDIO-VIDEO TECHNOLOGY						
Studio -TV and Photography	1	1,400	1,400		Must have min 14' clear below the studio lighting. Light grid min 18' a.f.f. High level of sound insulation in the studio surrounding walls and doors. Provide double doors into studio for moving of equipment and sets. Locate all A/V program spaces on the 3rd floor.	
Control Room	1	200	200		window to be sound insulated glazing. adj to studio with viewing window into all the studio.	
Audio-Sound Control Room	1	100	100		adj to control room with direct access	
Storage Room	1	200	200		access into studio for storage of cameras & misc equipment	
Audio Production Lab	1	1,200	1,200	25	25 computer stations, editing occurs at the student stations	
Video Production Lab	1	1,200	1,200	25	25 computer stations, editing occurs at the student stations	
Server Room	1	50	50		adjacent to Audio and Video Labs	
Green Room	0	0	0			
Staging/Storage Shop	0	0	0			
Computer Lab	1	1,200	1,200	25	25 computer stations	
Gaming/Graphic Design Computer Lab	1	1,200	1,200	25		
Storage	1	200	200		1 storage room or divide up the space between 4 labs	
Collaboration	1	700	700			

BUSINESS-ENTREPRENEURSHIP					
Spirit Store (shell-in for all spaces in the Business program)	1	700	700		locate on the 1st floor.
Marketing Classroom	1	725	725	25	
Storage Room	1	150	150		access from within Spirit Store
EDUCATION TRAINING					
Lab/Lecture Room (shell-in all spaces in the Education program)	1	1,400	1,400	25	Locate on the 2nd floor
Storage Room	1	200	200		
SUPPORT LABS - MULTIPURPOSE ROOMS - TPC's					
Modular Incubator Labs (future local partnerships). Plan for future expansion areas	2	1,800	3,600		Modular Labs are for future CTE programs designed to be opportunities for local businesses to partner with GISD. Storage included in the net area of 1,800sf per Lab. Provide with tall open structure ceilings. 1st floor.
Teacher Planning Centers	3	350	1,050		One TPC with Conference and 2 staff restrooms per floor
Conference Rooms	3	200	600		
Unisex Restrooms for Staff	6	36	216		
Reception/Lobby	1	500	500		CTE suite located on 1st floor
CTE Director Office	1	200	200		
Open Office	1	250	250		adjacent to CTE Office, serves as waiting room
Lobby Restroom	1	50	50		
Storage Room for CTE suite	1	50	50		
Multipurpose Room #2	1	1,500	1,500		used for Press Box functions, viewing games, student presentations, multi-function learning activities. 1 room per floor (assumed to be on the 3rd and/or 4th levels).
Outdoor Learning decks	2	500	1,000		locate with access to Multipurpose Rooms.
Press Box					Press box rooms are assumed to be located in the Multipurpose Rooms, they are shown for design purposes only
Home Coaches	1	200			seating for 9
Visitor Coaches	1	200			seating for 9
Video Deck	1	250			
Media Room	1	350			
Restrooms	4	48			
TV Room	1	75			seating for 2
Public Address Room	1	75			seating for 2
Scorer's Room	1	75			seating for 2
Radio Rooms	2	100			seating for 2
Web Broadcast Room	1	100			seating for 4
General Building Support					
Stairs	3	425	1,275		
Elevator	1	75	75		
Elevator Equipment Room	1	75	75		
Main Mechanical Room	1	300	300		
Main Electrical Room	1	300	300		
Electrical Rooms	6	50	300		
Riser Room	1	75	75		
Main Custodial	1	175	175		
Custodial	6	50	300		
MDF	1	200	200		
IDF	6	100	600		
Mechanical Room	1	250	250		shared with the home side stadium
Multi-User Restroom (men & women)	2		355		part of the home side stadium restrooms - located on 1st floor
Multi-User Restrooms - Boys	2	250	500		locate restrooms on floors 2 and 3.
Multi-User Restrooms - Girls	2	250	500		locate restrooms on floors 2 and 3.
SUBTOTAL NET AREA(s.f.)			45,151	303	CTE Max Capacity
Wall Area(sf)		40%	18,060		circulation space is shown in the Program spaces
Enclosed 2 story walkway connection, Main HS to CTE Building			7,500		ground level is open breezeway, 2nd floor enclosed and air conditioned
TOTAL GROSS AREA(s.f.)			70,711	227	Functional Capacity @ 75% of Max Capacity

Godley High School Spectator Gym		# of spaces	Area per space (S.F.)	Net Area (S.F.)	# Students Max Capacity	Remarks
SPECTATOR GYMNASIUM						
Spectator Gymnasium 50'x94' court	1	29,000	29,000	25		fixed seating for 2,500, support spaces located under the fixed seating.
Spaces located under bleachers						
Cheer & Dance Locker Rooms (incl rr & showers)	2	710				these 2 locker rooms double as the visitor locker rooms for indoor sports
Laundry Room	1	250				
Training Room	1	375				
Misc. Storage Rooms						as can fit under the bleachers
Misc Storage Room - low clg		1,500				as can fit under the bleachers
Concession/Storage	2	500				
Mens Public Restrooms	2	350				
Lobby	1	920	920			
Ticket Booths	2	80	160			
Womens Public Restrooms	2	780	1,560			
Family Restroom	1	75	75			
Custodian	1	100	100			
H.W. Heater Room	1	40	40			
IDF	1	60	60			
Multipurpose Rooms	2	800	1,600			used for student presentations, multi-function type spaces, viewing games, raised fixed seating for 20 in each room.
Stairs	2	450	900			
Mechanical Room	1	250	250			shared space with the visitor side stadium
Concessions	1	800	800			shared space with the visitor side stadium
Multi-User Restrooms (men & women)	2		355			shared space with the visitor side stadium
SUBTOTAL NET AREA(s.f.)			35,820	25	Max Capacity	
Wall Area(sf)			15%	5,373	circulation is included in the Spec.Gym	
TOTAL GROSS AREA(s.f.)			41,193	23	Functional Capacity @ 90% of Max Capacity	

Godley High School Practice Gymnasium & Locker Room Addition		# of spaces	Area per space (S.F.)	Net Area (S.F.)	# Students Max Capacity	Remarks
PRACTICE GYM & LOCKER ROOM ADDITION						
Boys Varsity Basketball Locker Room	1	400	400			15 lockers, verify size of lockers
Boys V. Basketball Restroom/Shower	1	200	200			
Boys JV Baseball/JV Soccer Locker Room	1	700	700			35 lockers, verify size of lockers
Boys Varsity Soccer Locker Room	1	600	600			30 lockers, verify size of lockers
Boys Restroom/Shower	1	420	420			shared restroom/shower baseball and soccer
Girls Varsity Basketball Locker Room	1	400	400			15 lockers, verify size of lockers
Girls Var. BB Restroom/Shower	1	200	200			
Girls Varsity Volleyball Locker Room	1	400	400			15 lockers, verify size of lockers
Girls Var VB Restroom/Shower	1	200	200			
Coaches Office - Men	1	225	225			for 8 coaches
Coaches Office - Women	1	225	225			for 8 coaches
Coaches Restroom/Shower	2	150	300			restroom/shower for each gender
Coaches Conference Room	1	225	225			
Officials Dressing Rooms	2	250	500			
Practice Gymnasium to be built in Phase 3 - plan for the appropriate space in the master plan						
Practice Gymnasium - 50'x94' court	1	9,900				Gymnasium serves as the tornado shelter, folding bleacher seating for 600 total (400 home side, 200 visitor side)
Shelter Control Room	1	125				locate inside the Practice Gym
Shelter Restrooms	6	50				unisex, individual restrooms-locate inside the Prac. Gym
Shelter Mech Room	1	100				locate inside the Practice Gym
SUBTOTAL NET AREA(s.f.)			4,995	0	Athletic Addition Max Capacity	
Walls & Circulation			35%	1,748		
TOTAL GROSS AREA(s.f.)			6,743	0	Functional Capacity @ 90% of Max Capacity	

Godley High School Classroom Addition		# of spaces	Area per space (S.F.)	Net Area (S.F.)	# Students Max Capacity	Remarks
Core Classroom Addition						
SS/History	2	710	1,420	50		folding walls between all classrooms
ELA	2	710	1,420	50		folding walls between all classrooms
Math	2	710	1,420	50		folding walls between all classrooms
Storage	1	100	100			
Science Lab/Lecture Rooms	3	1,624	4,872	84		designed for 28 students (max allowed by new TEA standards)
Prep Rooms	3	280	840			adjacent to each science lab
Administration Suite (Remote)						
Assistant Principal	1	200	200			
Counselor	1	200	200			
Waiting	1	250	250			
Storage	1	100	100			
Instructional Support						
Core Instruction Grade Teachers' Collaboration Area	1	450	450			
Teacher Lounge / Workroom	1	300	300			
Core Instruction Grade Storage	1	250	250			
Core Instruction Grade Collaboration Space	2	710	1,420			
Restrooms						
Core Instruction Grade (Girls) Restroom	2	200	400			1 per floor
Core Instruction Grade (Boys) Restroom	2	200	400			1 per floor
Teacher Restroom	2	50	100			
General Support						
Stairs	2	450	900			
Elevator	1	75	75			
Custodial	2	50	100			
MEP	2	100	200			
IDF	2	100	200			
General Storage	2	150	300			
			0			
SUBTOTAL NET AREA(s.f.)			15,917	234	Core Classroom Max Capacity	
Walls & Circulation			35%	5,571		
TOTAL GROSS AREA(s.f.)			21,488	211	Functional Capacity @ 90% of Max Capacity	



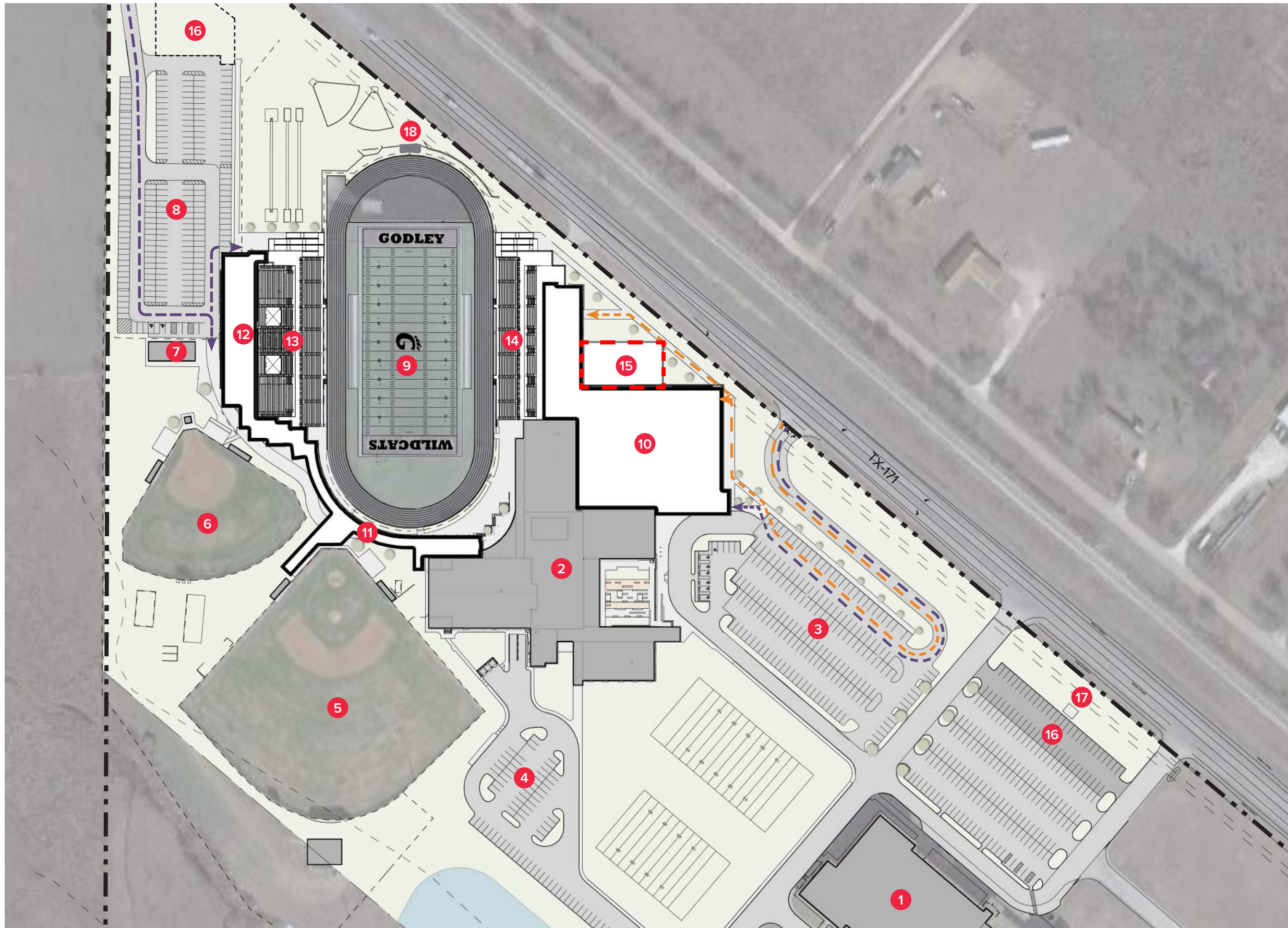
SITE PLAN KEY

- 1 EXISTING MIDDLE SCHOOL
- 2 EXISTING HIGH SCHOOL
- 3 HIGH SCHOOL PHASE 2 ADDITION
- 4 FUTURE PHASE 3 ADDITION
- 5 EXISTING BASEBALL FIELD
- 6 EXISTING SOFTBALL FIELD
- 7 FUTURE PRACTICE FIELDS AND FACILITY
- 8 NEW TENNIS LOCKER ROOMS AND 10 COURTS
- 9 EXISTING AG FACILITY
- 10 NEW PROPOSED PARKING

LINE TYPE LEGEND

- NEW BUILDING
- PROPERTY LINE
- FLOOD PLAIN





SITE PLAN KEY

- 1 EXISTING MIDDLE SCHOOL
- 2 EXISTING HIGH SCHOOL
- 3 EXISTING VISTOR/STUDENT PARKING
- 4 EXISTING STAFF PARKING
- 5 EXISTING BASEBALL FIELD
- 6 EXISTING SOFTBALL FIELD
- 7 EXISTING LOCKER ROOMS
- 8 EXISTING STADIUM/FIELDS PARKING
- 9 EXISTING FOOTBALL FIELD/ TRACK
- 10 NEW ARENA AND CLASSROOM ADDITION
- 11 NEW WALKWAY CONNECTION
- 12 NEW CTE ADDITION
- 13 NEW HOME SEATING - 4, 000
- 14 NEW VISTOR SEATING - 2,500
- 15 PHASE 3 - PRACTICE GYM/TOR-NADO SHELTER
- 16 NEW PARKING ADDITIONS - 58 SPACES
- 17 BAND TOWER
- 18 SCOREBOARD

LINE TYPE LEGEND

- NEW BUILDING
- PROPERTY LINE
- HOME
- VISITORS
- FUTURE TORNADO SHELTER

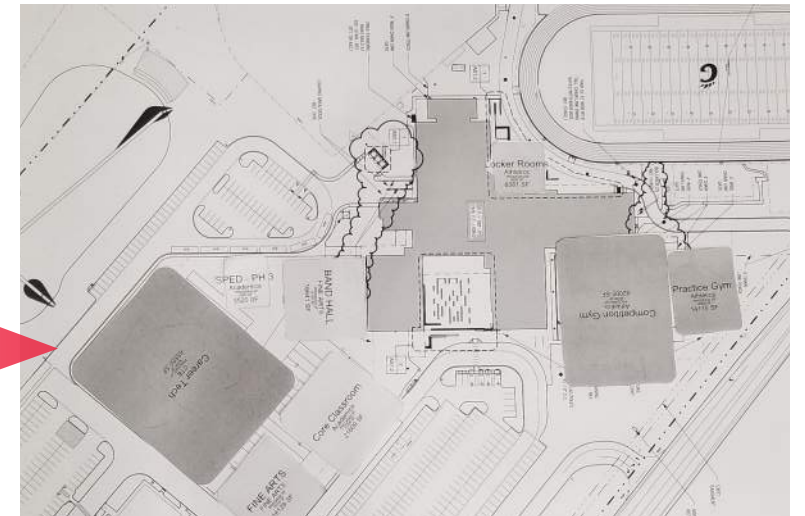




PREVIOUS MASTER PLAN



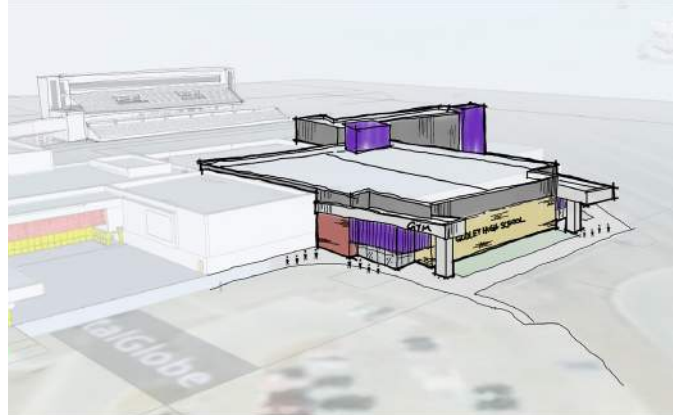
MASTER PLANNING SESSIONS WITH GODLEY ISD STAFF



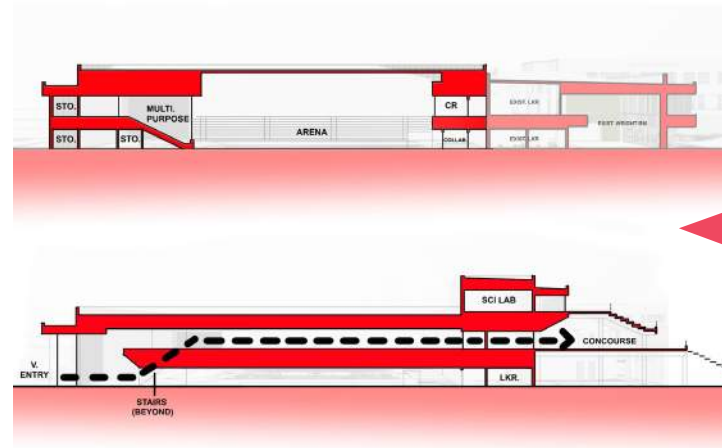
NEW MASTER PLAN DEVELOPMENT



CONCEPTUAL IMAGES



CONCEPTUAL IMAGES



CONCEPTUAL IMAGES



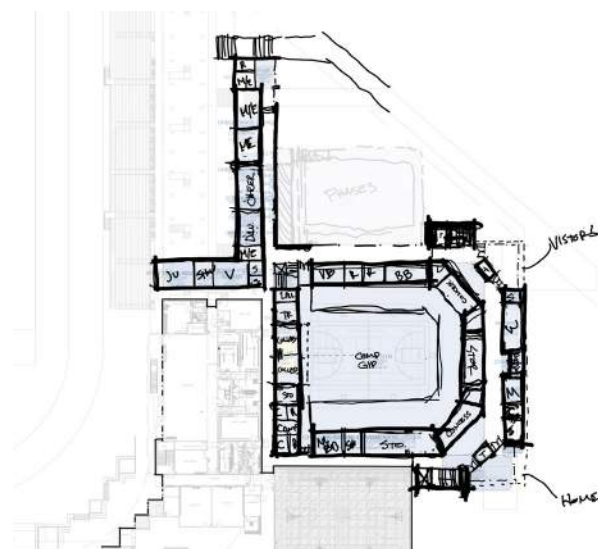
NEW MASTER PLAN DEVELOPMENT



CONCEPTUAL SKETCHES



CONCEPTUAL SKETCHES



CONCEPTUAL SKETCHES



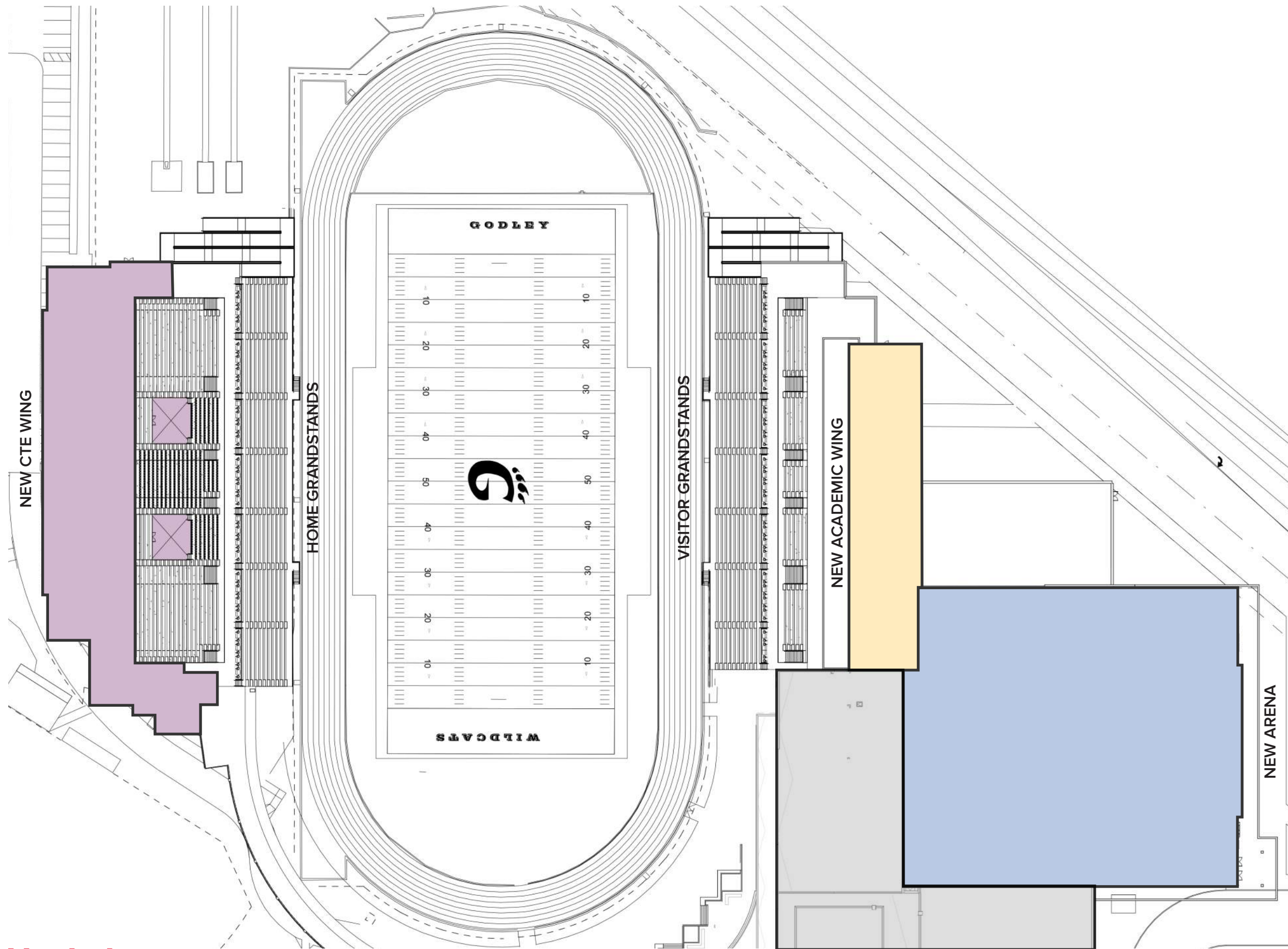
NEW MASTER PLAN CONCEPT

Huckabee

GODLEY HIGH SCHOOL PHASE 2 | GODLEY INDEPENDENT SCHOOL DISTRICT

NOT FOR REGULATORY APPROVAL, PERMITTING OR CONSTRUCTION. AUBREY M. SLAYBAUGH - TX 23,077

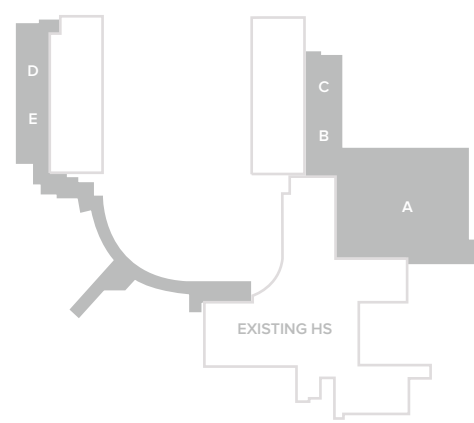
CONCEPTUAL PROCESS

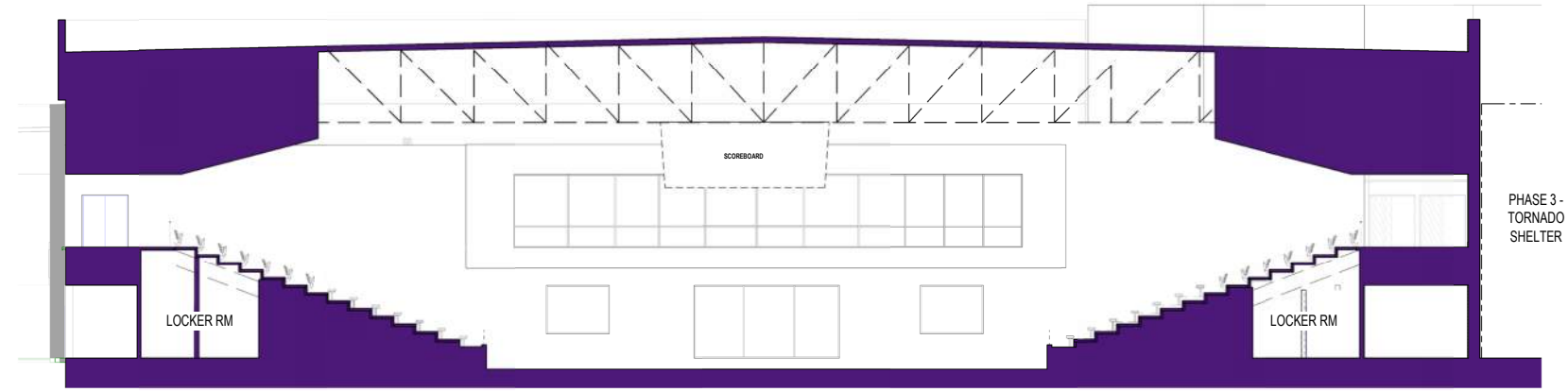


COLOR LEGEND

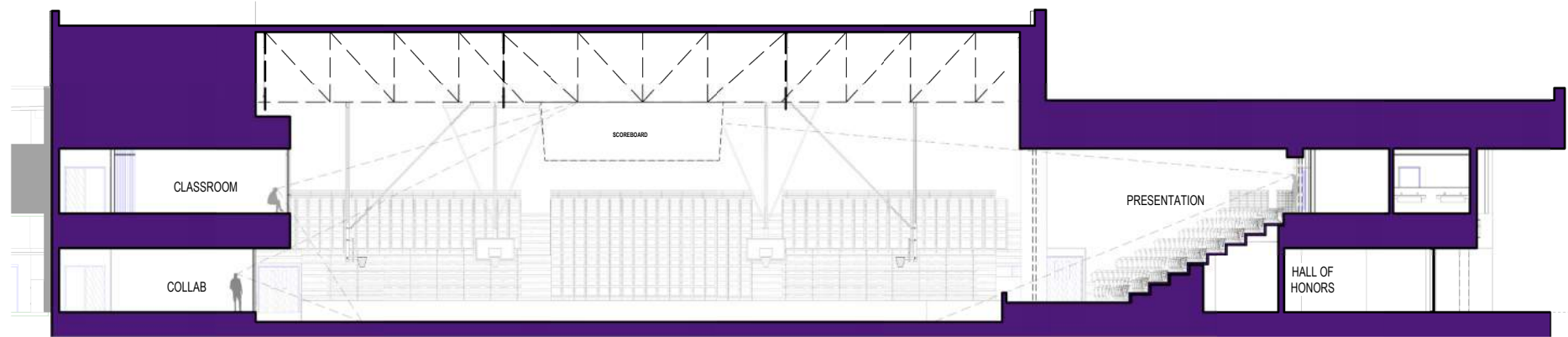
- ADMINISTRATION
- ADMINISTRATION SUPPORT
- ACADEMIC
- ACADEMIC SUPPORT
- ATHLETIC
- ATHLETIC SUPPORT
- CTE
- CTE SUPPORT
- CIRCULATION
- RESTROOMS/SUPPORT SPACES

KEY PLAN

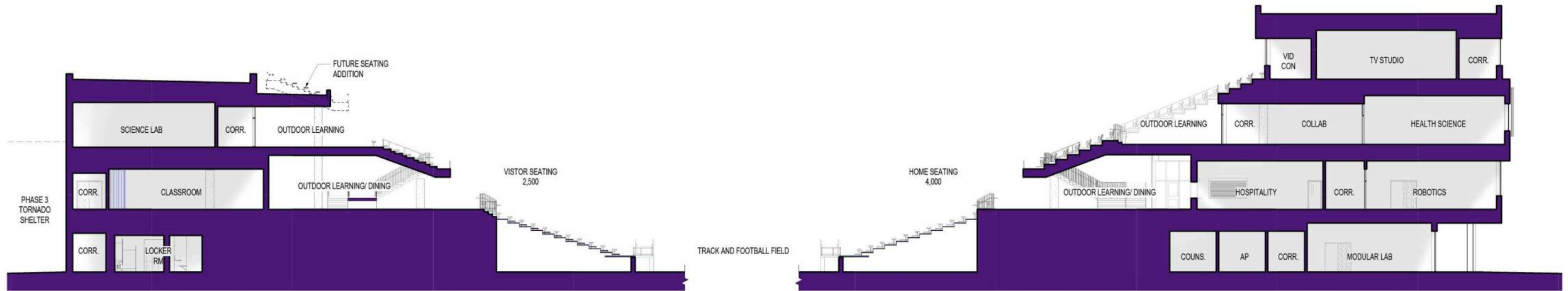




ARENA CROSS SECTION

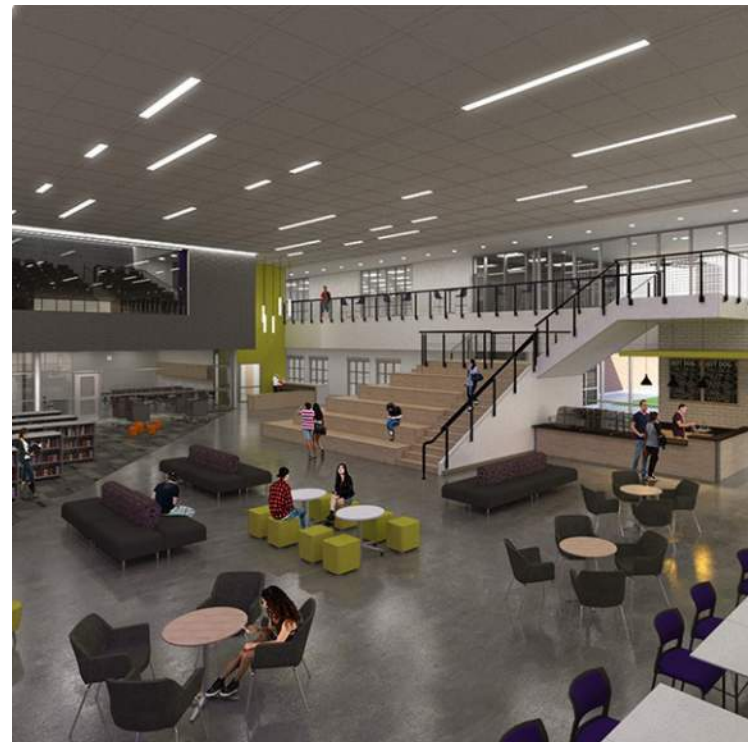


ARENA LONGITUDINAL SECTION



ATHLETICS/ VISITOR SIDE STADIUM

CTE/ HOME SIDE STADIUM



Huckabee

GODLEY HIGH SCHOOL PHASE 2 | GODLEY INDEPENDENT SCHOOL DISTRICT

NOT FOR REGULATORY APPROVAL, PERMITTING OR CONSTRUCTION. AUBREY M. SLAYBAUGH - TX 23,077

PRECEDENT IMAGES



GODLEY INDEPENDENT SCHOOL DISTRICT GODLEY HIGH SCHOOL PHASE 2



CAMPUS BIRDSEYE VIEW

Huckabee

GODLEY HIGH SCHOOL PHASE 2 | GODLEY INDEPENDENT SCHOOL DISTRICT

NOT FOR REGULATORY APPROVAL, PERMITTING OR CONSTRUCTION. AUBREY M. SLAYBAUGH - TX 23,077

PERSPECTIVES



GODLEY INDEPENDENT SCHOOL DISTRICT GODLEY HIGH SCHOOL PHASE 2



ATHLETICS / ACADEMIC ADDITION

Huckabee

GODLEY HIGH SCHOOL PHASE 2 | GODLEY INDEPENDENT SCHOOL DISTRICT

NOT FOR REGULATORY APPROVAL, PERMITTING OR CONSTRUCTION. AUBREY M. SLAYBAUGH - TX 23,077

PERSPECTIVES



GODLEY INDEPENDENT SCHOOL DISTRICT
GODLEY HIGH SCHOOL PHASE 2



ATHLETICS / ACADEMIC ADDITION WITH PHASE 3 SHELTER

Huckabee

GODLEY HIGH SCHOOL PHASE 2 | GODLEY INDEPENDENT SCHOOL DISTRICT

NOT FOR REGULATORY APPROVAL, PERMITTING OR CONSTRUCTION. AUBREY M. SLAYBAUGH - TX 23,077

PERSPECTIVES





GODLEY INDEPENDENT SCHOOL DISTRICT
GODLEY HIGH SCHOOL PHASE 2



ARENA ENTRANCE

Huckabee

GODLEY HIGH SCHOOL PHASE 2 | GODLEY INDEPENDENT SCHOOL DISTRICT

NOT FOR REGULATORY APPROVAL, PERMITTING OR CONSTRUCTION. AUBREY M. SLAYBAUGH - TX 23,077

PERSPECTIVES



GODLEY INDEPENDENT SCHOOL DISTRICT
GODLEY HIGH SCHOOL PHASE 2



CTE ADDITION

Huckabee

GODLEY HIGH SCHOOL PHASE 2 | GODLEY INDEPENDENT SCHOOL DISTRICT

NOT FOR REGULATORY APPROVAL, PERMITTING OR CONSTRUCTION. AUBREY M. SLAYBAUGH - TX 23,077

PERSPECTIVES



GODLEY INDEPENDENT SCHOOL DISTRICT

GODLEY HIGH SCHOOL PHASE 2



CTE ADDITION/ HOME SIDE STADIUM

Huckabee

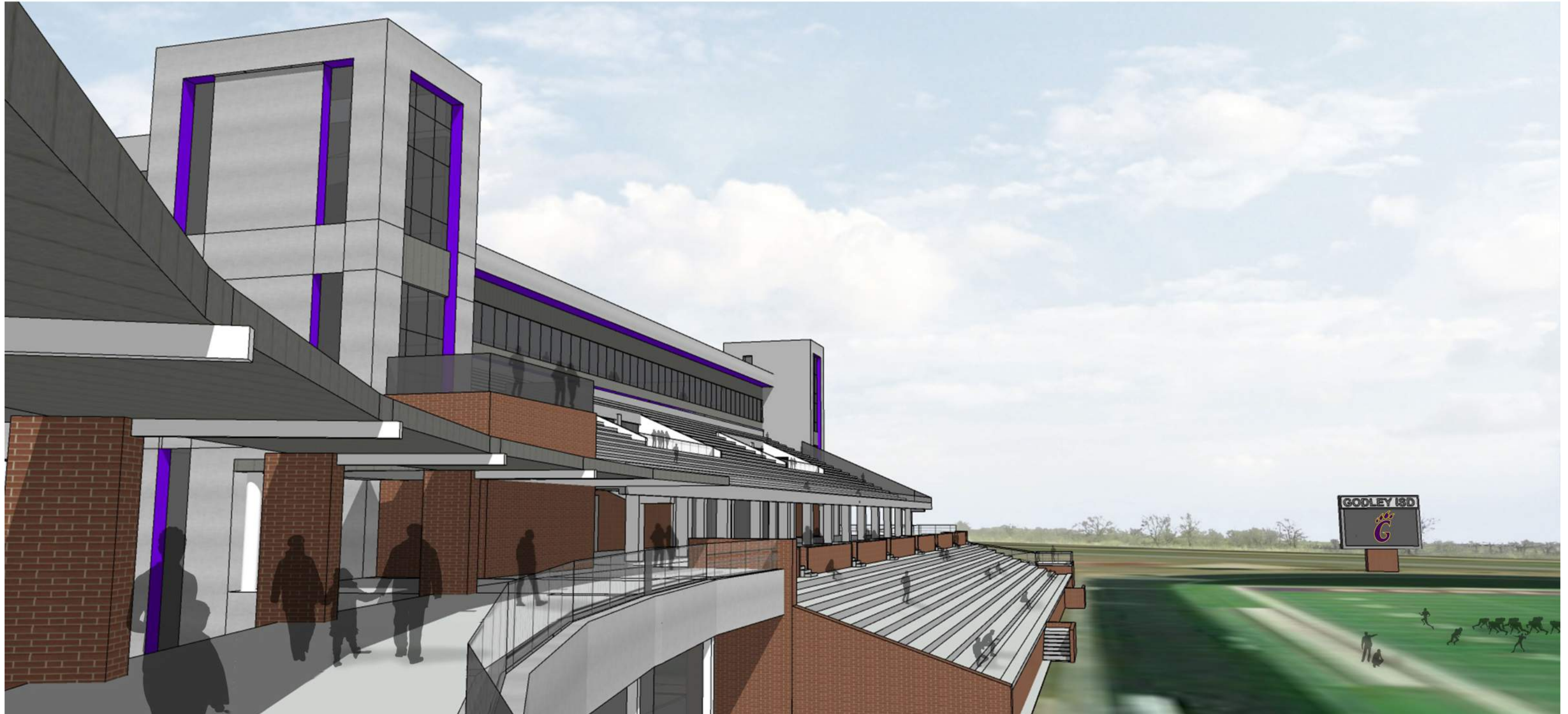
GODLEY HIGH SCHOOL PHASE 2 | GODLEY INDEPENDENT SCHOOL DISTRICT

NOT FOR REGULATORY APPROVAL, PERMITTING OR CONSTRUCTION. AUBREY M. SLAYBAUGH - TX 23,077

PERSPECTIVES



GODLEY INDEPENDENT SCHOOL DISTRICT
GODLEY HIGH SCHOOL PHASE 2



WALKWAY CONNECTION TO CTE

Huckabee

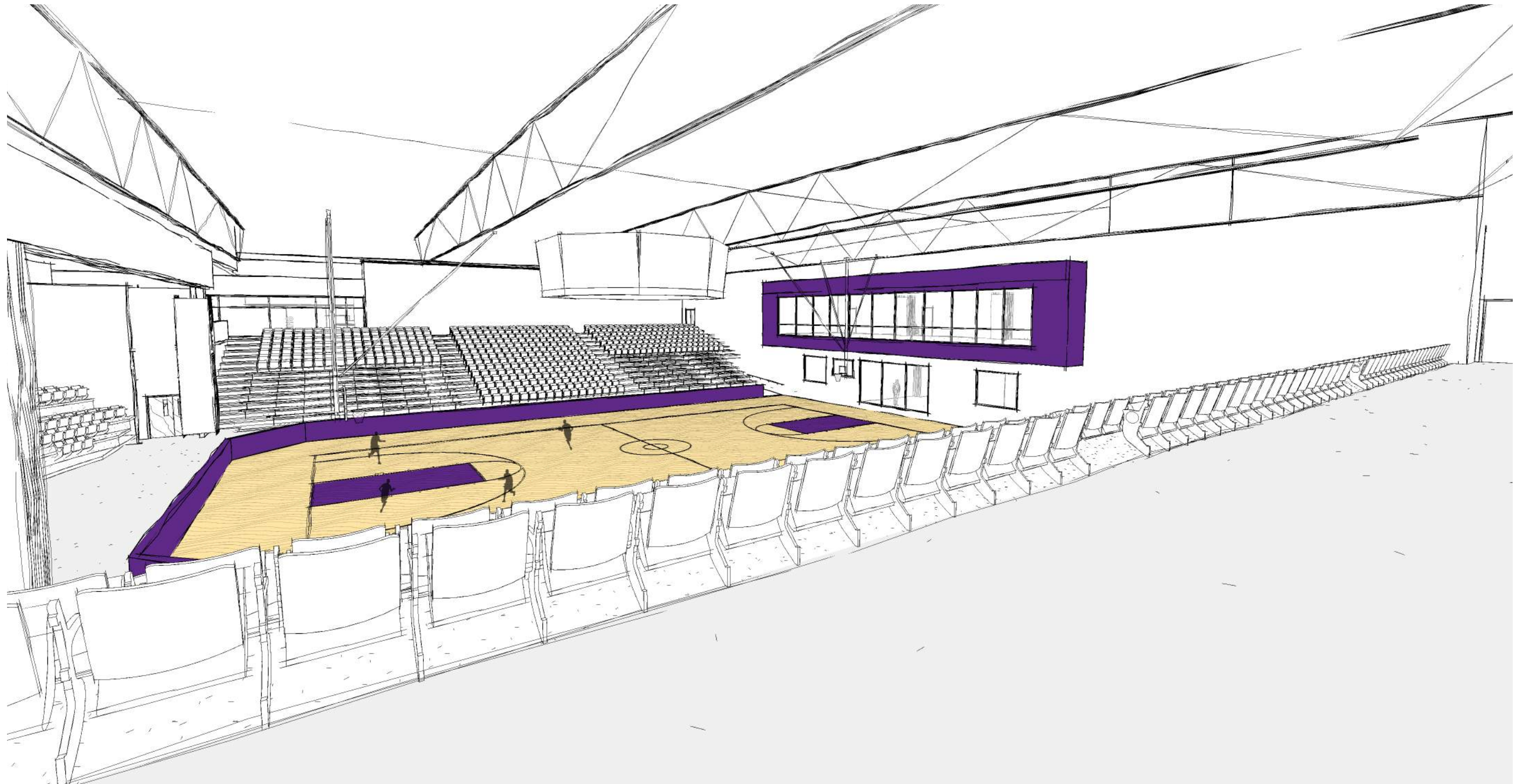
GODLEY HIGH SCHOOL PHASE 2 | GODLEY INDEPENDENT SCHOOL DISTRICT

NOT FOR REGULATORY APPROVAL, PERMITTING OR CONSTRUCTION. AUBREY M. SLAYBAUGH - TX 23,077

PERSPECTIVES



GODLEY INDEPENDENT SCHOOL DISTRICT
GODLEY HIGH SCHOOL PHASE 2



ARENA CONCOURSE INTERIOR VIEW

Huckabee

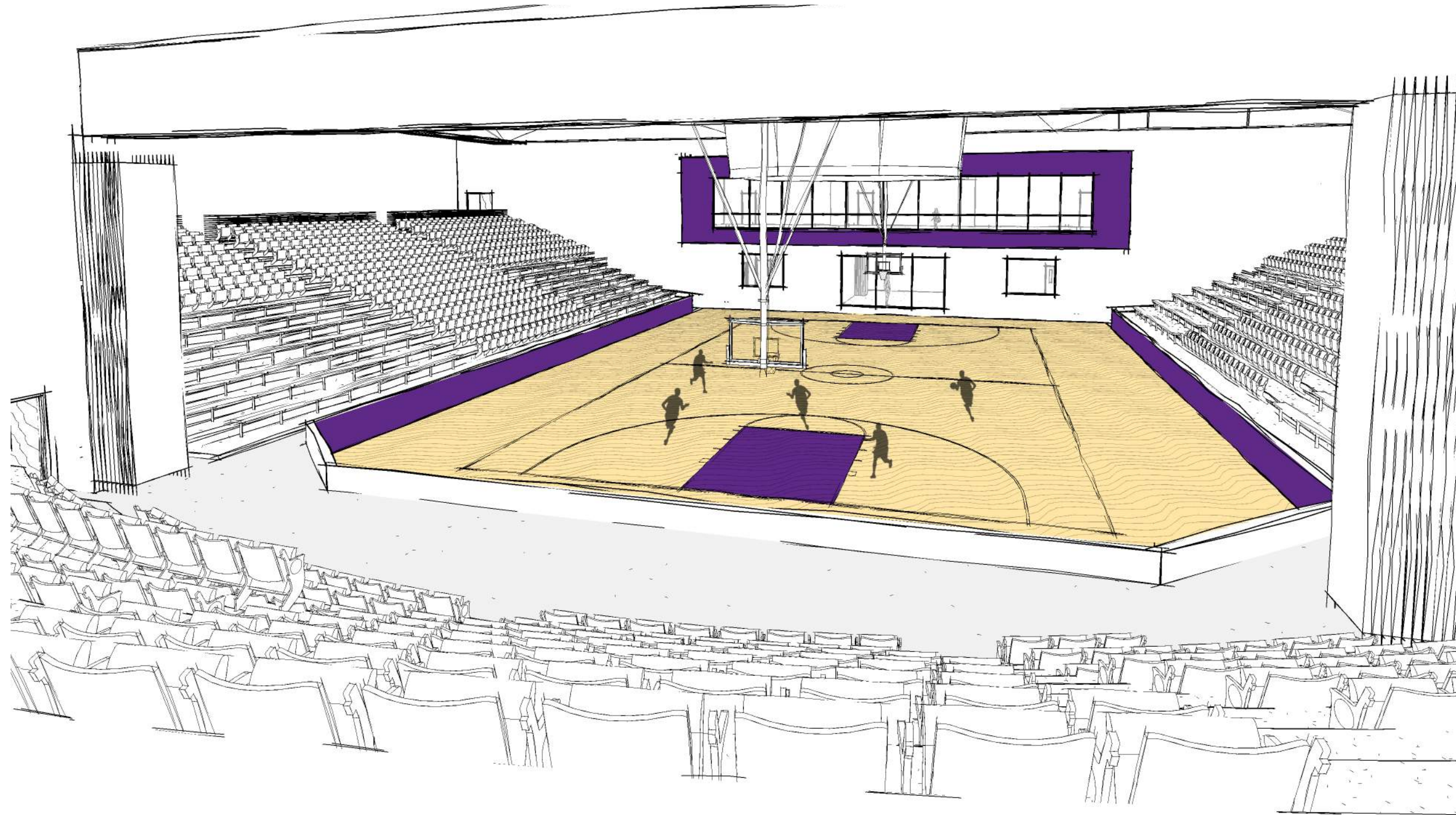
GODLEY HIGH SCHOOL PHASE 2 | GODLEY INDEPENDENT SCHOOL DISTRICT

NOT FOR REGULATORY APPROVAL, PERMITTING OR CONSTRUCTION. AUBREY M. SLAYBAUGH - TX 23,077

PERSPECTIVES



GODLEY INDEPENDENT SCHOOL DISTRICT GODLEY HIGH SCHOOL PHASE 2



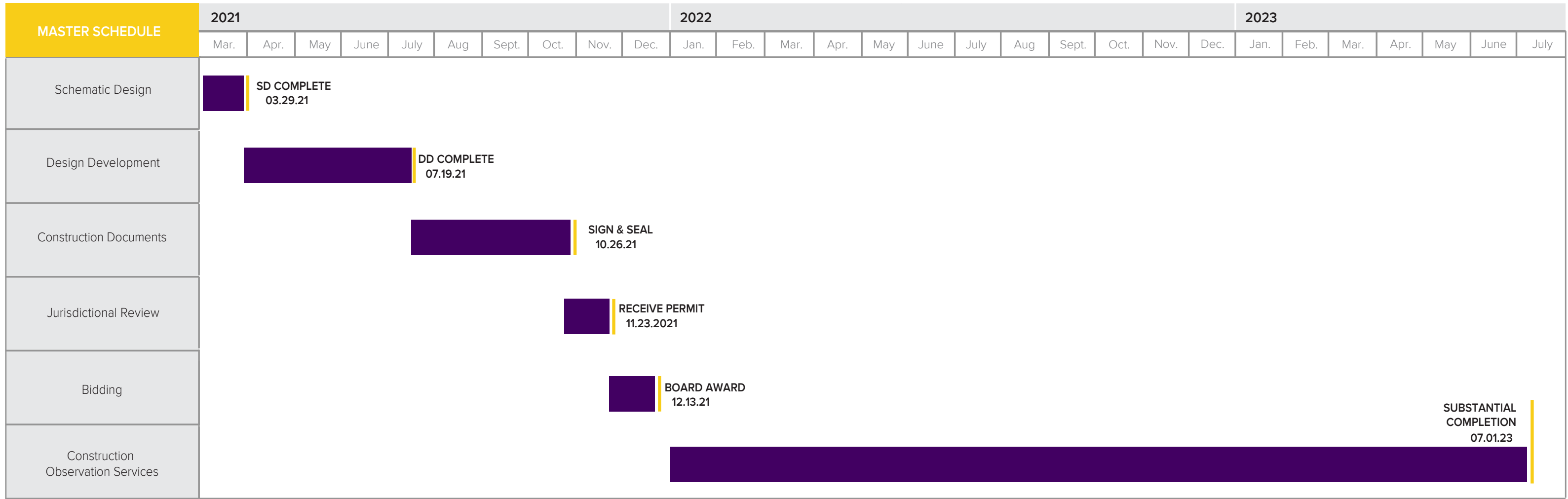
PRESENTATION ROOM INTERIOR VIEW

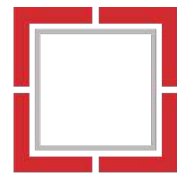
Huckabee

GODLEY HIGH SCHOOL PHASE 2 | GODLEY INDEPENDENT SCHOOL DISTRICT

NOT FOR REGULATORY APPROVAL, PERMITTING OR CONSTRUCTION. AUBREY M. SLAYBAUGH - TX 23,077

PERSPECTIVES





MORE THAN ARCHITECTS