

GODLEY INDEPENDENT SCHOOL DISTRICT
GODLEY ELEMENTARY SCHOOL #3

January 21, 2021

SCHEMATIC DESIGN PRESENTATION



ACKNOWLEDGMENTS	01
NARRATIVE	02
PROGRAM	03
SITE PLANS	04
CONCEPTUAL DESIGN LAYOUTS	05
FLOOR (REDACTED) PLANS	06
PRECEDENT IMAGES	07
PERSPECTIVES	08
SCHEDULE	09



GODLEY INDEPENDENT SCHOOL DISTRICT GODLEY ELEMENTARY SCHOOL #3



DISTRICT BOARD OF TRUSTEES

Matt McKittrick	Board President
Dennis McFarlin	Board Vice President
Craig Stevenson	Board Secretary
Marissa Abbott	Board Member
Terrie Goodloe	Board Member
Christa Heiner	Board Member
Greg L. Miller	Board Member

GODLEY ISD DESIGN TEAM

Dr. Rich Dear	Superintendent
Jason Karnes	Assistant Superintendent
Airemy Caudle	Learning Design & Curation Director
Cheryl Villanueva	College & Career Readiness Director
Keri Grimsley	Principal, Godley Elementary
Melissa Block	Principal, 2-4 Campus
Ammie Hill	Principal, 5-6 Campus

PROJECT TEAM

Daren Kirbo, AIA
Principal, Huckabee

Aubrey Slaybaugh, AIA, LEED AP
Associate Principal, Huckabee

Casey Casstevens, AIA, RID
Director of Design,
Fort Worth, Huckabee

Joshua Cogburn, AIA
Project Architect, Huckabee

Lauren Hoyle, RID
Interior Designer, Huckabee

Mike King, AIA
Planning, Huckabee

Esther Sumpter, AIA, LEED AP
Architect, Huckabee

Nicole Fraise
Architectural Associate, Huckabee

CIVIL ENGINEERING & LANDSCAPE ARCHITECTURE

Adams Consulting Engineering
Dallas, TX

STRUCTURAL ENGINEERING

Huckabee
Fort Worth, TX

MEP ENGINEERING

Romine, Romine and Burgess
Fort Worth, TX

TECHNOLOGY

True North Consulting Group
Waco, TX

FOOD SERVICE

JMK Food Service Consulting & Design
Rowlett, TX



GODLEY INDEPENDENT SCHOOL DISTRICT

GODLEY ELEMENTARY SCHOOL #3

INTRODUCTION

In anticipation of a bond election in May 2021, a new elementary school is being planned to accommodate district growth. As part of the 2021 bond program, grade level alignments are proposed to shift. The existing 2-4 intermediate campus will also be converted to an elementary school as a separate project. The addition of this campus creates three elementary schools serving grades PK/K-5.

DESIGN PROCESS

Once the District, Board of Trustees, and Facilities Planning Committee agreed that a new elementary school was needed to address capacity in the district, a design committee was formed that included district administration and campus level principals and staff. Some committee members went on in-person and virtual tours of comparable facilities to understand current trends for instructional design. Huckabee also conducted a design charrette with the full committee to discuss the overall adjacencies and layout of the building. Following this, there have been bi-weekly project meetings to continue to advance the progress of the design.



Design Charrette

SITE

This new elementary school is being designed within the new Silo Mills development on FM 917 on the eastern side of the district. Construction of Phase 1 of the residential development, including its amenities center, will be occurring simultaneously with the new elementary school.

Through conversations with the developer, this site was chosen because of its adjacency to the community's amenity center, a nearby park, and convenient access to the main road and utilities. This 16.15 acres site sits within the ETJ of Cleburne.

This site has sufficient acreage to provide more on-site vehicle cueing compared to existing district campuses, limiting the amount of traffic impeding local streets. The parents will drop off their children at the front of the building, using the driveway located along Silo Mills Parkway to the west. The buses will drop off on the east side of the site and remain completely separate from parent traffic. There is staff parking inside of the bus loop and visitor and event parking within the parent loop. Service and deliveries will also use the bus loop to access the screened dock and dumpster area near the kitchen.

There is a variety of outdoor activity spaces, including a playground for younger students on the south side of the building, nearest the PK-K wings and a playground on the north side of the building outside of the gym for the older students. Next to that will be a hard court and a synthetic turf area. There will also be a variety of outdoor learning areas between the classroom wings and outside of music and art. It is the district's intent that some of these spaces can be used by the entire neighborhood.

EXTERIOR

The surrounding development will have a hill country theme. This campus will have some sloped roof lines, natural stone, and wood-look accents to blend with this aesthetic. The front of the campus will face west toward Silo Mills Parkway, the main thoroughfare through the development. Shading is provided in key areas via deep eaves, walkway covers, and trellises.

ACADEMIC "HOUSES"

This new campus for 700 students is designed with the intent that it can become the first of a new prototype elementary for the district, which will ensure equity for future campuses. Flex classrooms allow the capacity to be increased to 800 if needed. This 110,000 square foot, two-story facility will have 7 academic "houses." On the first floor, there will be one house dedicated to PK and special education, one dedicated to Kindergarten, and one for grades 1-5. The second floor will have 4 houses for grades 1-5. These 5 houses are designed with six equal classrooms per house so that each house can be dedicated to a single grade level, or they can function in a vertical grade level configuration (one classroom of each grade per house). There is a sixth flex classroom provided in each house to provide room for growth, break out space, or to accommodate other campus needs.

Within and near each academic house, a variety of indoor and outdoor collaboration spaces are designed so that instruction can move beyond the classroom walls. The larger collaboration area in the center of each house has direct oversight from the row of windows in each classroom and is large enough for multiple classes to be working together on projects. To the side, there is a smaller area for break-out instruction. Between each pair of houses is an outdoor porch or patio that can also be used as instructional space. There is a sink that can be conveniently accessed from both the indoor and outdoor collaboration areas, since these areas will also serve as science lab spaces. To allow for increased teamwork, each pair of classrooms has a folding partition between them that can be opened to create a larger collaborative classroom space.

Additionally, each academic house or pair of houses includes staff and student restrooms, a teacher planning area and conference room, and a central storage room.

Each pair of academic houses is secured with a door that has access control that can be locked down from the main office or an administrator's phone. Classroom doors will be lockable, and interior classroom windows will have a solid roller shade that can be pulled to quickly restrict visibility into the classroom.



GODLEY INDEPENDENT SCHOOL DISTRICT

GODLEY ELEMENTARY SCHOOL #3

CENTER FOR LEARNING AND INNOVATION (CL&I) AND DINING

The heart of the campus is the combined Center for Learning and Innovation (CL&I) and Dining space. The main entrances from the front and back of the building will enter directly into this space, and all classroom houses and fine arts and PE spaces feed directly into this space. Similar to Godley High School, this hub is extremely flexible with all moveable furniture so that it can operate as a library, large group project space or staff development space, dining area, and/or assembly area. It is anchored at one end with a multi-purpose stage / flex classroom and at the other end with a learning stair that can seat two classes. The intent of the playful learning stair and floor pattern and the cloud-like ceiling motifs is to create an organic park-like setting that lends itself to multiple types of zones for a variety of functions. To enhance this impression, the center columns will be tree-like structures, and other spaces around the perimeter will have trellises to bring down the scale of the space. To help with acoustics, there will be soft flooring like carpet and rubber, absorptive ceilings, and acoustic panels either on the walls or suspended in the space.

Outside of the CL&I is the largest of the outdoor learning spaces. The design of this space is still in development, but it may include a covered and/or trellised area, large projection surface, fixed and moveable seating, synthetic turf, and other creative modules such as maps or grids for teachers and students to utilize. There is also a second-floor balcony that connects to this space.

Another space off of the CL&I is a maker-space where a class can go for craft-type projects, robotics, and other tasks where durable surfaces and additional power are needed.

ADMINISTRATION

The Admin Suite including Counselor's office, clinic, and main reception area are all adjacent to the CL&I for convenient access. The reception area is connected to the main entrance of the campus, which is a controlled entry, requiring all patrons to enter the reception area before being allowed access to the campus. Off the reception area is a restroom for public use, clinic access, and conference room access, all intended to reduce the need for people to enter the main campus. Just across from the reception area is a community room for

PTA and similar use, again limiting access to the main campus. Within the administration suite is an additional conference room, offices for the Principal, Assistant Principal, PEIMS, and Special Education. A combined work room and break room with connection to a covered outdoor area is also provided.

FINE ARTS AND GYM/SHELTER

Behind the multi-purpose stage / classroom is the music room, with direct access to the stage. Across the hall is the art classroom, which has ideal north light. Both spaces have easy access to an outdoor learning and performance space. This space is still in development, but it may include a raised platform with amphitheater seating. The intent is that this space can also be shared with the community. During nice weather, there is the possibility to open the music room, stage, and dining area to the outdoor space through a series of overhead doors and moveable partitions.

The gym on this campus will also serve as the code-required tornado shelter that can withstand 250mph winds. It will be built of pre-cast concrete panels and have a concrete roof. It will have its own restrooms and its own control room with operational procedures in the event of severe weather. The gym itself will have an 84' long basketball court and a standard volleyball court. There will be seating on one side for 250 people. It will have exterior access to a nearby playground and hard court.

SCHEDULE

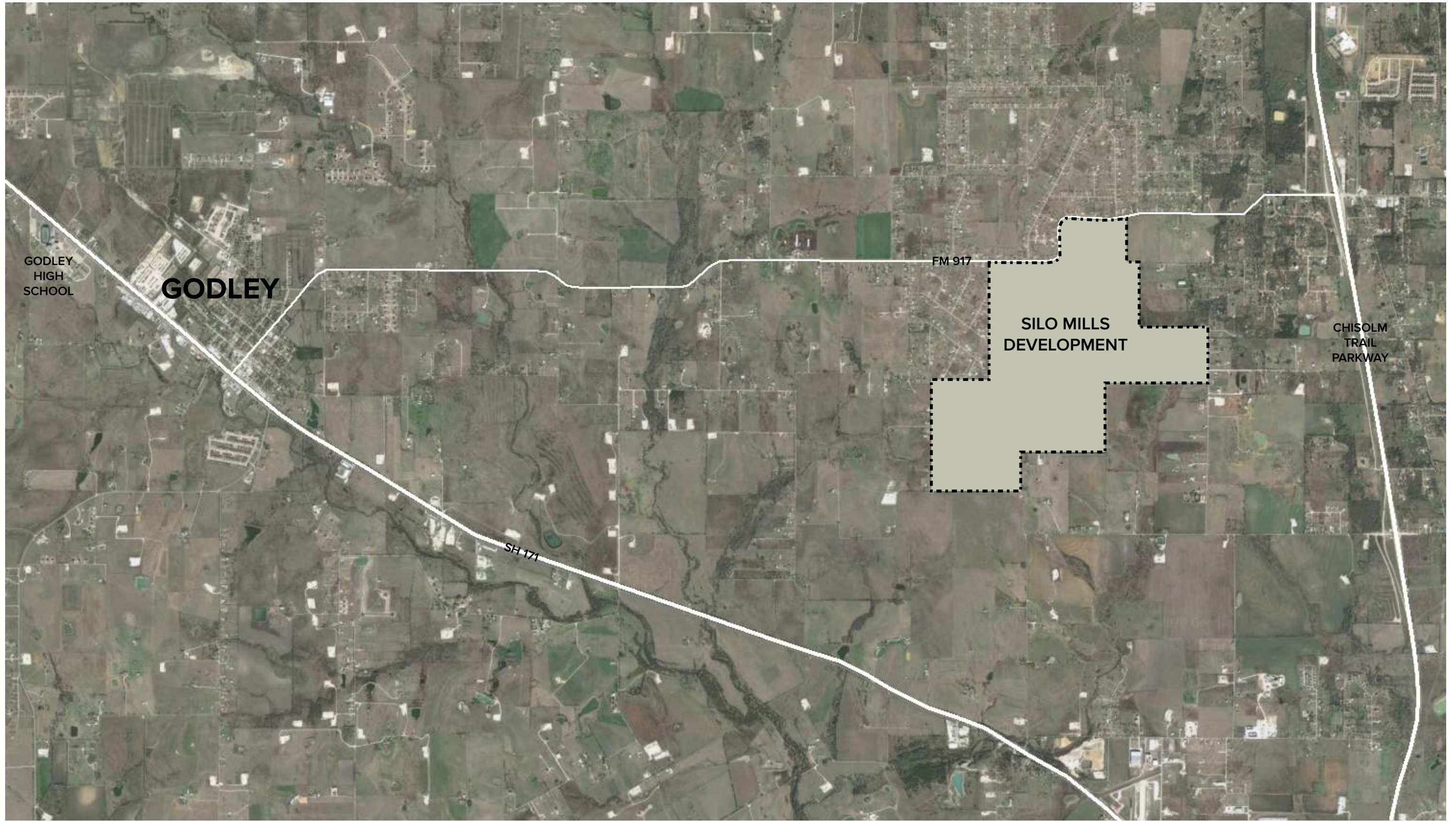
Dependent on the success of a May 2021 bond election, construction will start in June 2021 and be completed in late July 2022 for school to begin in August 2022.

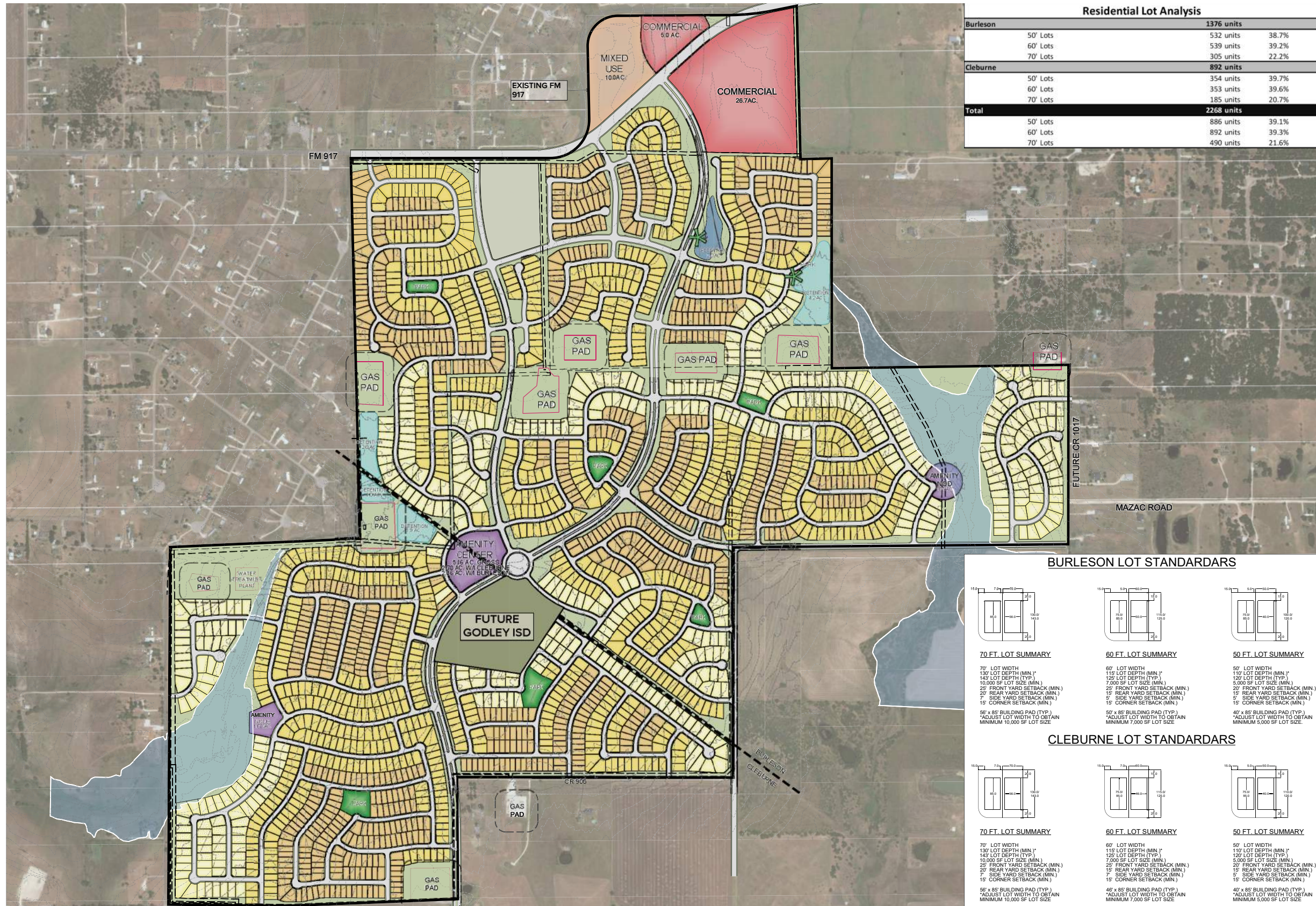
Godley ISD				January 21, 2021					
NEW ELEMENTARY SCHOOL #3				PROGRAM		CAPACITY ANALYSIS			
700 Student Capacity-STEM FOCUSED				# of spaces	Area per space (S.F.)	Net Area (S.F.)	Remarks	Max Cap. (TEA-Instruct. Spaces)	Functional Cap. (90% of Max Cap)
INSTRUCTIONAL SPACES									
Instructional				31,200					
PreK Classrooms	4	850	3,400	15 students per room		60	54		
PreK Restrooms	4	60	240	Locate pair of rr's btwn PreK Classrooms					
PreK Storage Rooms	2	100	200	Locate btwn PreK Classrooms					
Kindergarten Classrooms	5	750	3,750	22 students per room, K thru 4		110	99		
Kindergarten Restrooms	6	60	360	Locate pair of rr's btwn Kinder Classrooms					
1st Grade Classrooms	5	750	3,750			110	99		
2nd Grade Classrooms	5	750	3,750			110	99		
3rd Grade Classrooms	5	750	3,750			110	99		
4th Grade Classrooms	5	750	3,750			110	99		
5th Grade Classrooms	5	750	3,750	25 students per room		125	113		
Flex Classrooms	6	750	4,500	1 Flex CR for each grade level, ALL rooms counted for the overall capacity of the school		150	135		
Science Lab	0	0	0	Science occurs within the collaboration areas					
Group Classrooms in Grade Level Houses, each House has collaboration and 1 Flex Classroom.									
Instructional Support				12,950					
Teacher Planning Centers (TPC)	4	400	1,600	verify number of TPC's per Option regarding House alignments					
Teacher Lounge	1	800	800	locate central to the campus					
Conference Rooms	4	200	800	locate adj to each TPC					
Teacher Restroom	6	50	300	locate 1 per TPC and 2 near Cafetorium					
Grade Level Storage Room	6	175	1,050	locate one per collaboration area					
Collaboration Areas	6	1,400	8,400	1 collaboration area per House (except none for PK), verify					
General Support				2,010					
Multi User Restrooms	6	200	1,200						
Custodial Closets	3	75	225						
Electrical Rooms	3	120	360						
IDF Rooms	3	75	225						
INSTRUCTIONAL -SUBTOTAL NET AREA (sf)				46,160					
Walls & Circulation (sf)				35%		16,156			
TOTAL GROSS AREA (sf)				62,316					
SPECIAL PROGRAM SPACES									
Special Education									
Resource									
OT/PT Landing Zone	1	400	400	flex open office space for 4					
Dyslexia	2	400	800	folding partition btwn these spaces					
Speech Pathology	1	400	400						
Resource	0	0	0	reference Flex Classroom spaces (4 clrms to be used as					
Behavioral Intervention Classroom	1	700	700			10	9		
De-escalation room	0	0	0	occurs within the Behavioral Interv. Classroom					
Life Skills									
Life Skills	1	850	850	lower level handicap students; provide residential kitchen. Life Skills and Motor Lab will serve as flex spaces for SPED programs tbd for this campus. LS may occur at other District facilities. This space could serve as PPCD if needed.		10	9		
Motor Skills	1	750	750	adjacent to ADC					
Restroom	1	150	150	available to Motor Skills, and Life Skills. Provide hc roll-in shower and diaper changing table					
Storage Room	1	100	100	available to Motor Skills, and Life Skills					
SPECIAL PROGRAMS-SUBTOTAL NET AREA				4,150					
Walls & Circulation (sf)				35%		1,453			
TOTAL GROSS AREA (sf)				5,603					

FINAL

NEW ELEMENTARY SCHOOL #3				PROGRAM		CAPACITY ANALYSIS			
700 Student Capacity-STEM FOCUSED				# of spaces	Area per space (S.F.)	Net Area (S.F.)	Remarks	Max Cap. (TEA-Instruct. Spaces)	Functional Cap. (90% of Max Cap)
FINE ARTS									
Music									
Music Room	1	1,500	1,500	provide cabinet with 1 sink				N/A	N/A
Music Storage	1	150	150						
Visual Arts									
Art Classroom	1	1,000	1,000	Provide cabinet with 3 sinks with plaster traps				N/A	N/A
Art Storage	1	150	150						
	0		0						
FINE ARTS-SUBTOTAL NET AREA (sf)				2,800					
Walls & Circulation (sf)				35%		980			
TOTAL GROSS AREA (sf)				3,780					
CORE SPACES									
Center for Learning & Innovation (CLI)				4,989					
CLI - Stacks-Media	1	2,559	2,559	3,900sf is total of all spaces per TEA requiremts, not including the Literacy Library or Learning Stair - 4,600sf provided. CLI overlaps the cafeteria space approx 550sf.				N/A	N/A
Office	1	200	200						
Workroom	1	115	115	provide cabinet with sink					
Storage	1	200	200						
Maker Space	1	810	810	Provide a Maker Space within the CLI in lieu of a Comp. Lab				N/A	N/A
Green Room	1	200	200	One or two walls with green paint for TV broadcast background					
Learning Stair	1	515	515	Provide Storage below a portion of the LS					
Literacy Library	1	390	390						
Cafeteria				8,412					
Dining									
Dining Area	1	3,612	3,612	Dining for 266@ 15sf each (total dining for 800 over 3 periods), 430 in chairs for events. Cafeteria overlaps CLI space approx 550sf.					
Stage & Ramps									
Stage	1	1,000	1,000						
Ramps	1	300	300						
Storage	1	300	300	Storage for tables and chairs					
Kitchen & Serving									
Kitchen - Food Preparation and Scullery	1	3,200	3,200	Includes all listed rooms in the Kitchen					
Dry Storage									
Freezer/Cooler									
Office									
Locker Room									
Laundry Room									
Custodial Room									
Restroom									
Serving Lines (2)									
Physical Education				9,082					
Gymnasium (Tornado Shelter)	1	7,856	7,856	50'x84' basketball court, Gym to serve as the tornado shelter for the campus-approx capacity of 1,000 people for the shelter. Folding bleacher seating for 250.				N/A	N/A
Boys Restroom	2	69	138	locate inside the storm shelter					
Girls Restroom	2	69	138	locate inside the storm shelter					
Shelter Control Room	1	102	102	locate inside the storm shelter					
Coach's Office	1	115	115	locate inside the storm shelter					
P.E. Storage	1	133	133	locate inside the storm shelter					
General Support									
Girls Multi-Use Restroom	1	225	225						
Boys Multi-Use Restroom	1	225	225						
Custodial Closets	1	50	50						
IDF Rooms	1	100	100						
CORE SPACES-SUBTOTAL NET AREA (sf)				22,483					
Walls & Circulation (sf)				33%		7,419			
TOTAL GROSS AREA (sf)				29,902					

NEW ELEMENTARY SCHOOL #3				PROGRAM	CAPACITY ANALYSIS	
700 Student Capacity-STEM FOCUSED	# of spaces	Area per space (S.F.)	Net Area (S.F.)	Remarks	Max Cap. (TEA-Instruct. Spaces)	Functional Cap. (90% of Max Cap)
MAIN ADMINISTRATION						
Administrative Spaces						
Control Vestibule	0	0	0	included in the general circulation space		
Reception	1	450	450			
Principal's Office	1	225	225			
Principal Secretary	1	125	125	adj to Princ Office		
Asst. Principal Office	1	175	175			
Counselor's Office	1	175	175			
Test Materials	1	50	50	near Counselor's office		
Flex Offices	2	150	300	for future staff		
Admin. Conference Room	1	250	250	conference room for 8 to 10		
Admin Mail/Work Room	1	350	350			
Admin Break Room	1	200	200			
Admin Restrooms	2	65	130			
PEIMS	1	120	120			
Vault (Student Records)	1	75	75			
Admin File Storage	1	150	150			
ISS	1	200	200	locate room adjacent to the main office area. Space for 4 student cubicles and 1 teacher desk		
ISS Restroom	1	65	65	locate within the ISS room		
SPED Office Suite						
ARDs Conference Room	1	250	250	room for 10 to 12, access to main offices and SPED suite		
SPED Offices	3	110	330			
Storage Room	1	100	100			
Volunteer Workroom	1	344	344			
Volunteer Restroom	1	65	65			
Clinic						
Nurse	1	250	250	with cot area for 2 cots		
Clinic Toilet	1	75	75	provide diaper changing table		
Exam Room	1	75	75			
Clinic Storage	1	75	75			
Isolation Room	1	75	75			
MAIN ADMIN-SUBTOTAL NET AREA (sf)			4,679			
Walls & Circulation (sf)		30%	1,404			
TOTAL GROSS AREA (sf)			6,083			
GENERAL FACILITY SUPPORT						
Stairwells	2	450	900			
Elevator	1	80	80	Machineless room elevator		
Main Electrical	1	200	200			
Main Mechanical	1	200	200			
Main Custodial	1	150	150			
Riser Room	1	75	75			
MDF	1	150	150			
GEN.FACILITY-SUBTOTAL NET AREA (sf)			1,755			
Walls & Circulation (sf)		32%	556			
TOTAL GROSS AREA (sf)			2,311			
SUBTOTAL NET AREA (sf)			82,027	CAPACITY TOTALS (not including Flex CR)	755	680
TOTAL GROSS AREA (sf)			109,995	CAPACITY TOTALS (including Flex CR)	905	815

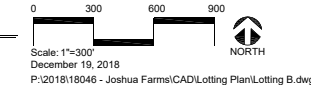




TERRAMANNA MESA
 2001 North Lamar Street Suite 100
 Dallas, TX 75202
 214.871.5555
 FAX 214.871.1507

BURLESON/CLEBURNE LOTTING PLAN

SILO MILLS
 JOHNSON COUNTY, TEXAS

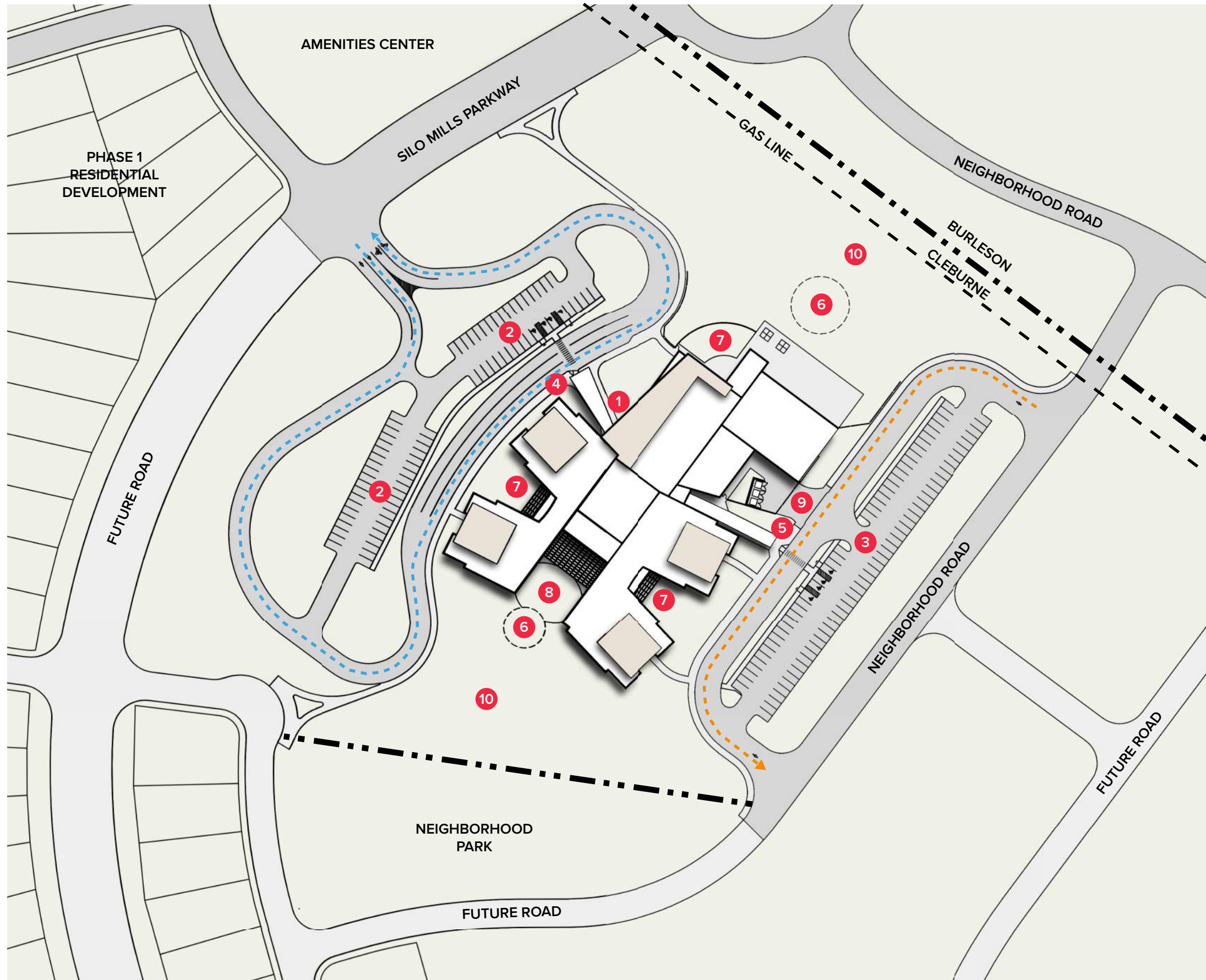


Huckabee

GODLEY ELEMENTARY SCHOOL #3 | GODLEY INDEPENDENT SCHOOL DISTRICT

NOT FOR REGULATORY APPROVAL, PERMITTING OR CONSTRUCTION. AUBREY M. SLAYBAUGH - TX. 23.077

SITE DEVELOPMENT PLAN



SITE PLAN KEY

- 1 MAIN ENTRY
- 2 VISITOR PARKING
- 3 STAFF PARKING
- 4 PARENT DROP OFF
- 5 BUS DROP OFF
- 6 PLAYGROUND
- 7 OUTDOOR LEARNING
- 8 COURTYARD
- 9 SERVICE DRIVE
- 10 PLAY FIELD

LINE TYPE LEGEND

- New Building
- Bus Drop-off
- Parent Drop-off
- Property Line

SITE PLAN STATISTICS

ACREAGE

Total: 16.15 acres

PARKING

Staff/Visitor: 159

Handicap: 8

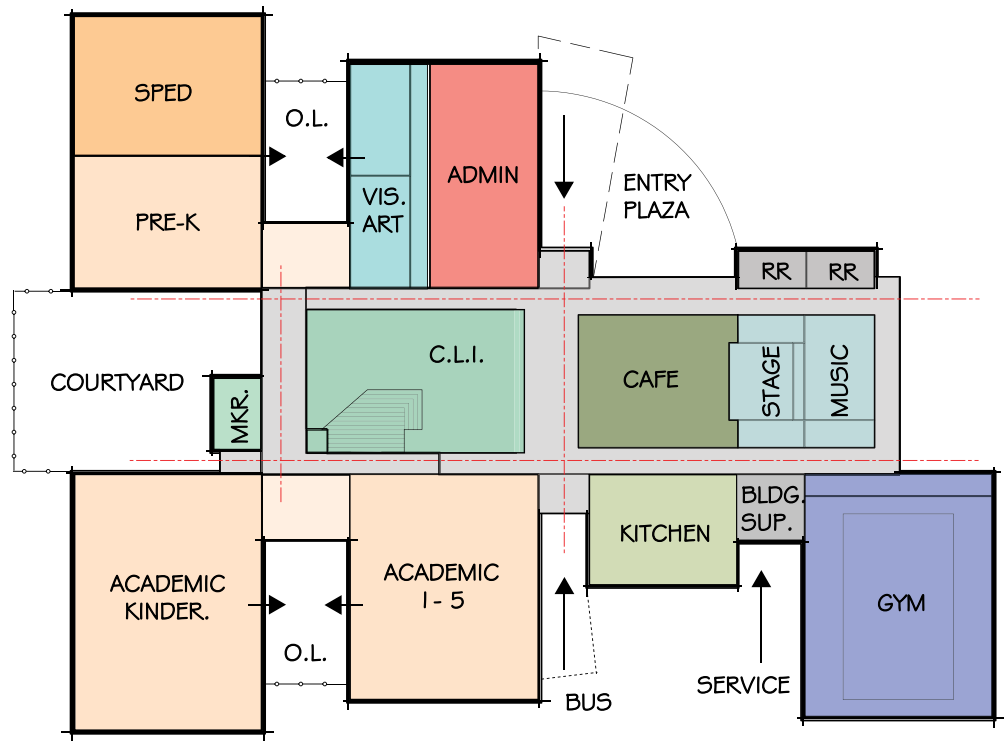
Total: 167

STACKING

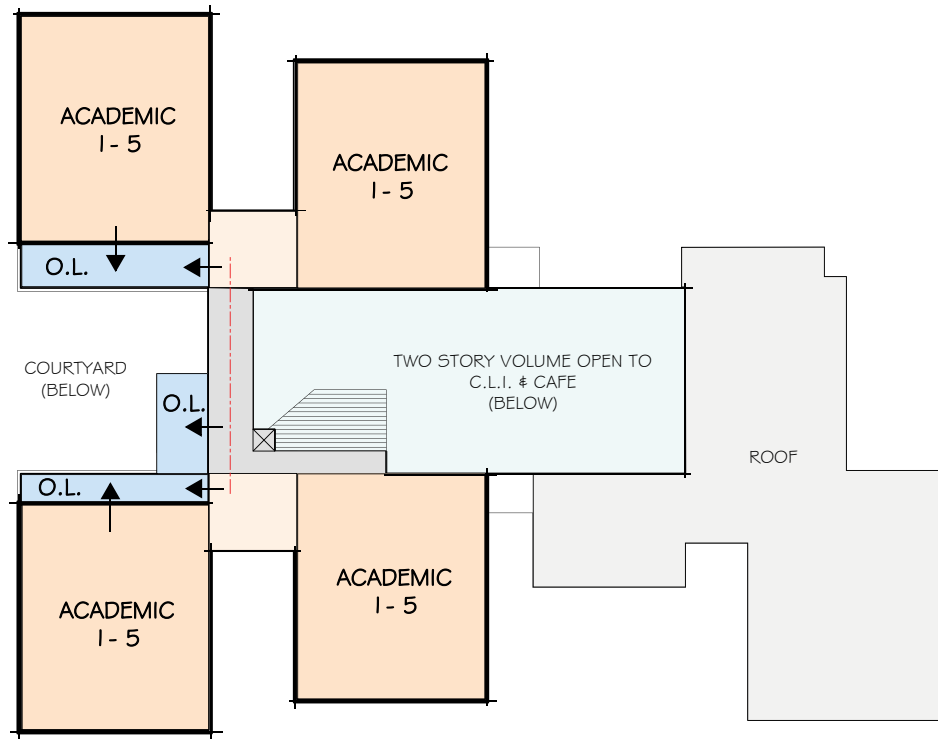
Parent Stacking: 1185 LF, 87 Cars

Bus Stacking: 408 LF, 8 Buses

Total: 1593 LF



FULL TWO STORY CONCEPT



FULL TWO STORY CONCEPT - SECOND FLOOR

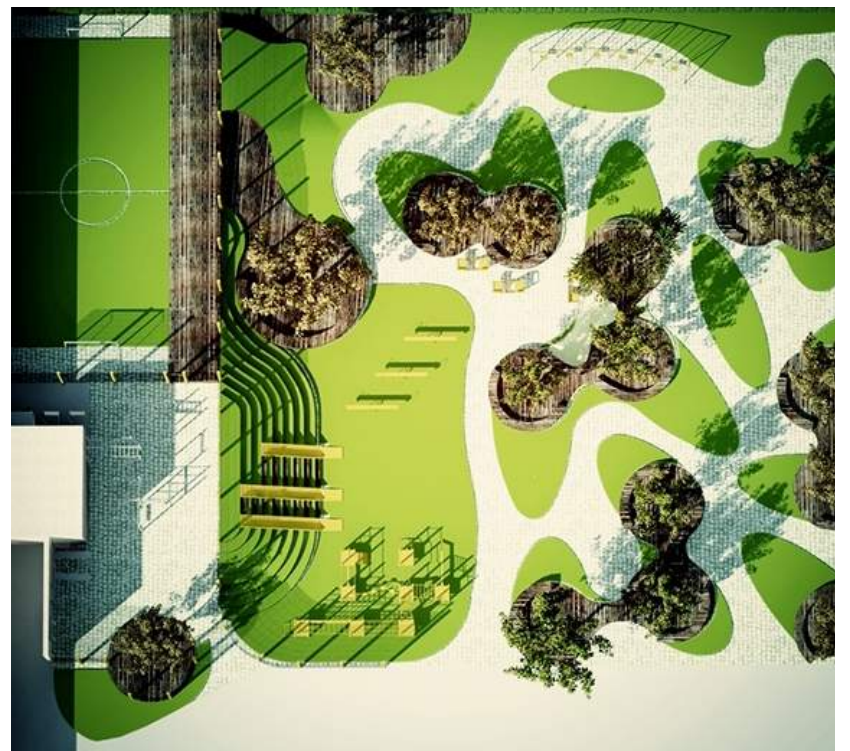




SILO MILLS AESTHETIC PER DEVELOPER



SILO MILLS AESTHETIC PER DEVELOPER



9 DOT

Huckabee

GODLEY ELEMENTARY SCHOOL #3 | GODLEY INDEPENDENT SCHOOL DISTRICT

NOT FOR REGULATORY APPROVAL, PERMITTING OR CONSTRUCTION. AUBREY M. SLAYBAUGH - TX, 23,077

PRECEDENT IMAGES



OVERALL EXTERIOR VIEW



MAIN ENTRANCE VIEW



CL&I VIEW TO DINING

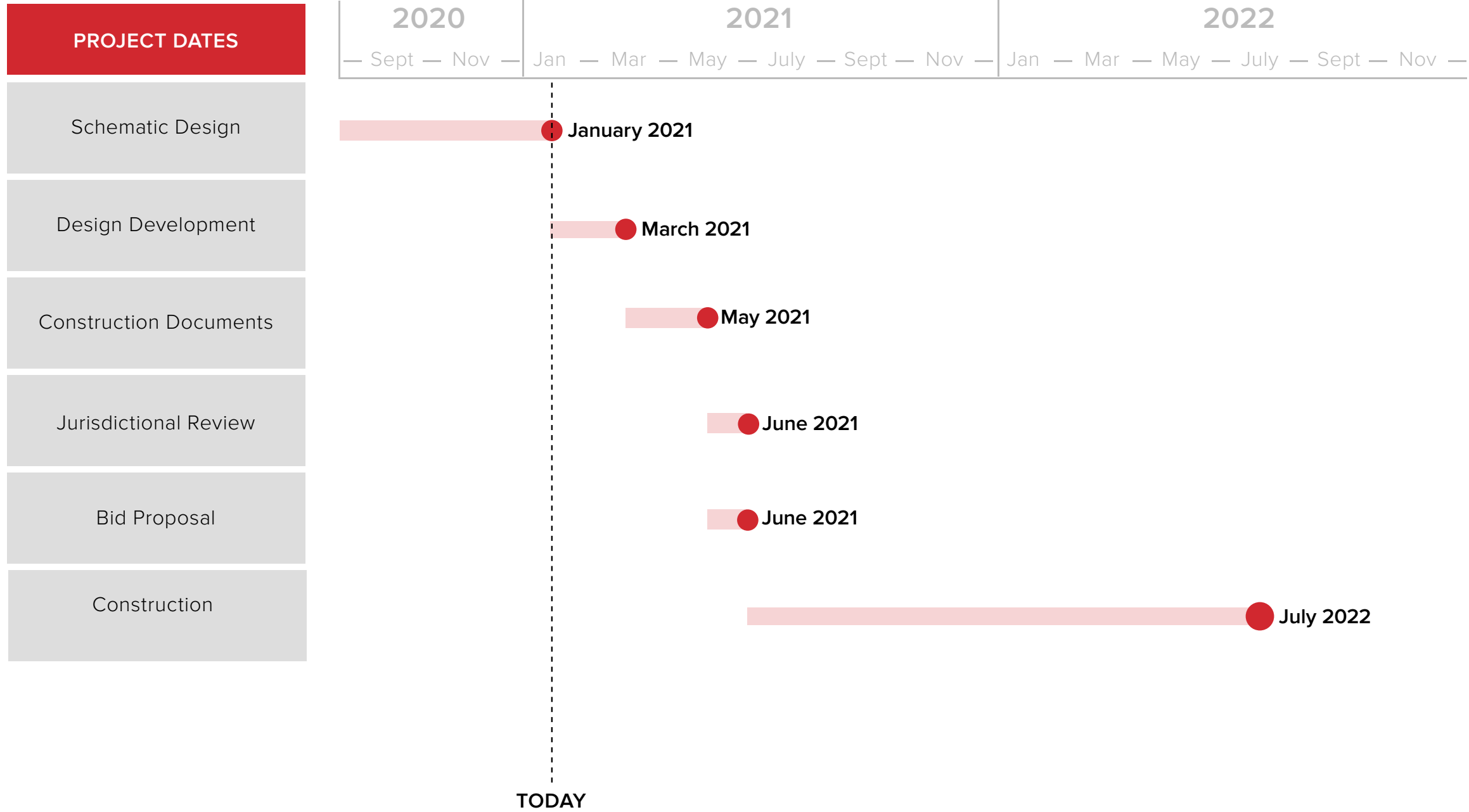


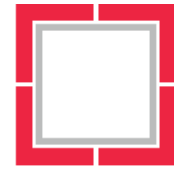
DINING VIEW TO CL&I



GODLEY INDEPENDENT SCHOOL DISTRICT

GODLEY ELEMENTARY SCHOOL #3





MORE THAN ARCHITECTS