

GODLEY INDEPENDENT SCHOOL DISTRICT
GODLEY ELEMENTARY SCHOOL #3

March 29, 2021

DESIGN DEVELOPMENT PRESENTATION



ACKNOWLEDGMENTS 01

SITE PLAN 02

FLOOR (REDACTED) NS 03

PRECEDENT IMAGES 04

PERSPECTIVES 05

SCHEDULE 06



GODLEY INDEPENDENT SCHOOL DISTRICT GODLEY ELEMENTARY SCHOOL #3



DISTRICT BOARD OF TRUSTEES

Matt McKittrick	Board President
Dennis McFarlin	Board Vice President
Craig Stevenson	Board Secretary
Marissa Abbott	Board Member
Terrie Goodloe	Board Member
Christa Heiner	Board Member
Greg L. Miller	Board Member

GODLEY ISD DESIGN TEAM

Dr. Rich Dear	Superintendent
Jason Karnes	Assistant Superintendent
Airemy Caudle	Learning Design & Curation Director
Cheryl Villanueva	College & Career Readiness Director
Keri Grimsley	Principal, Godley Elementary
Melissa Block	Principal, 2-4 Campus
Ammie Hill	Principal, 5-6 Campus

PROJECT TEAM

Daren Kirbo, AIA
Principal, Huckabee

Aubrey Slaybaugh, AIA, LEED AP
Associate Principal, Huckabee

Casey Casstevens, AIA, RID
Director of Design,
Fort Worth, Huckabee

Joshua Cogburn, AIA
Project Architect, Huckabee

Lauren Hoyle, RID
Interior Designer, Huckabee

Mike King, AIA
Planning, Huckabee

Esther Sumpter, AIA, LEED AP
Architect, Huckabee

Nicole Fraise
Architectural Associate, Huckabee

CIVIL ENGINEERING & LANDSCAPE ARCHITECTURE

Adams Consulting Engineering
Dallas, TX

STRUCTURAL ENGINEERING

Huckabee
Fort Worth, TX

MEP ENGINEERING

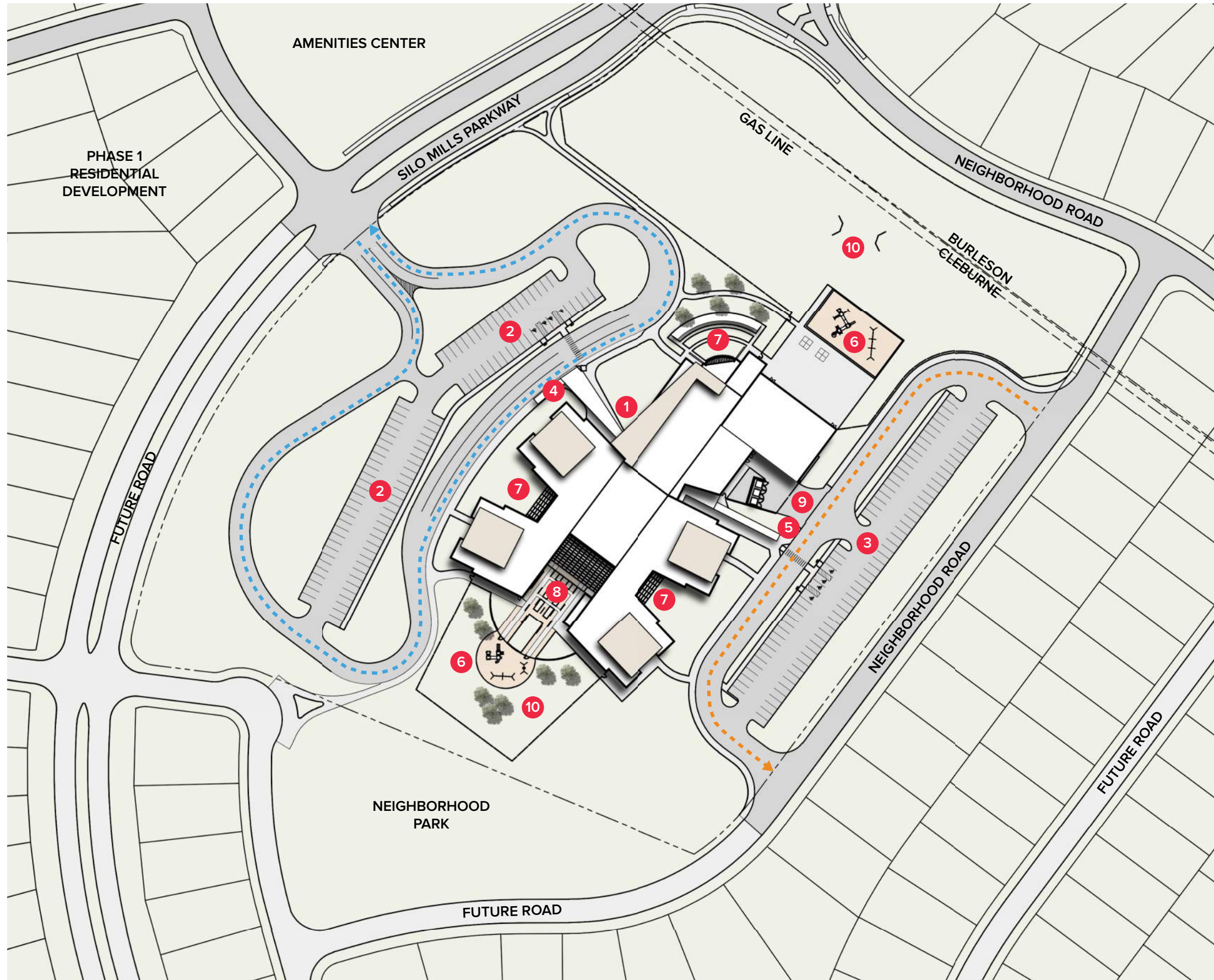
Romine, Romine and Burgess
Fort Worth, TX

TECHNOLOGY

True North Consulting Group
Waco, TX

FOOD SERVICE

JMK Food Service Consulting & Design
Rowlett, TX



SITE PLAN KEY

- 1 MAIN ENTRY
- 2 VISITOR PARKING
- 3 STAFF PARKING
- 4 PARENT DROP OFF
- 5 BUS DROP OFF
- 6 PLAYGROUND
- 7 OUTDOOR LEARNING
- 8 COURTYARD
- 9 SERVICE DRIVE
- 10 PLAY FIELD

LINE TYPE LEGEND

- New Building
- Bus Drop-off
- Parent Drop-off
- Property Line

SITE PLAN STATISTICS

ACREAGE

Total: 14.8 acres

PARKING

Staff/Visitor: 188
 Handicap: 8
 Total: 196

STACKING

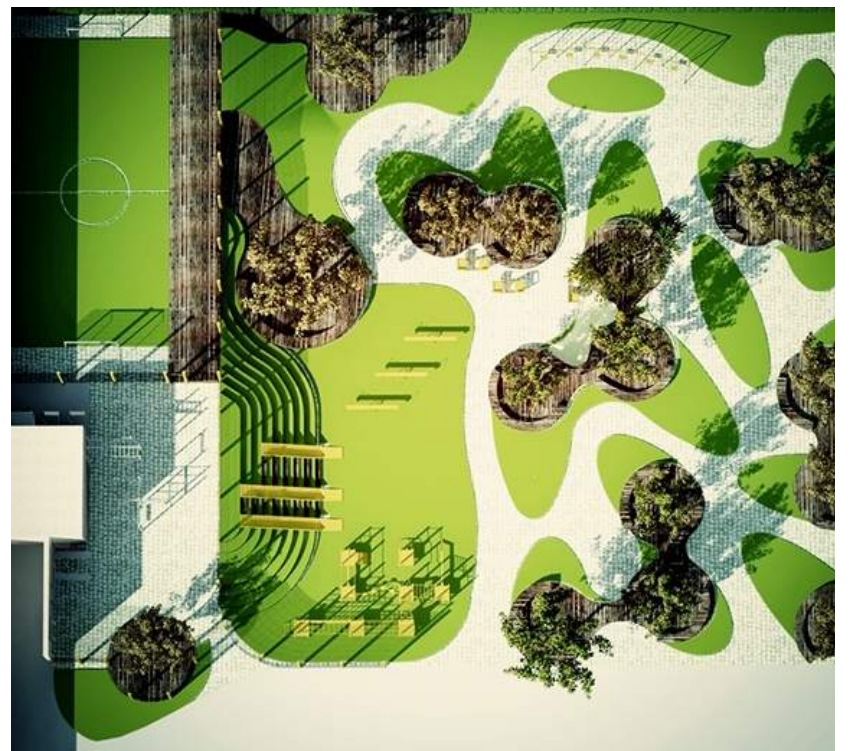
Parent Stacking: 1185 LF, 87 Cars
 Bus Stacking: 408 LF, 8 Buses
 Total: 1593 LF



SILO MILLS AESTHETIC PER DEVELOPER



SILO MILLS AESTHETIC PER DEVELOPER



9 DOT

Huckabee

GODLEY ELEMENTARY SCHOOL #3 | GODLEY INDEPENDENT SCHOOL DISTRICT

NOT FOR REGULATORY APPROVAL, PERMITTING OR CONSTRUCTION. AUBREY M. SLAYBAUGH - TX. 23,077

PRECEDENT IMAGES



OVERALL EXTERIOR VIEW

Huckabee

GODLEY ELEMENTARY SCHOOL #3 | GODLEY INDEPENDENT SCHOOL DISTRICT

NOT FOR REGULATORY APPROVAL, PERMITTING OR CONSTRUCTION. AUBREY M. SLAYBAUGH - TX. 23,077

EXTERIOR PERSPECTIVES

05



CINEMA

Huckabee

GODLEY ELEMENTARY SCHOOL #3 | GODLEY INDEPENDENT SCHOOL DISTRICT

NOT FOR REGULATORY APPROVAL, PERMITTING OR CONSTRUCTION. AUBREY M. SLAYBAUGH - TX. 23,077

EXTERIOR PERSPECTIVES

05



AMPHITHEATER

Huckabee

GODLEY ELEMENTARY SCHOOL #3 | GODLEY INDEPENDENT SCHOOL DISTRICT

NOT FOR REGULATORY APPROVAL, PERMITTING OR CONSTRUCTION. AUBREY M. SLAYBAUGH - TX. 23,077

EXTERIOR PERSPECTIVES

05



DINING



CL&I - LOOKING EAST

Huckabee

GODLEY ELEMENTARY SCHOOL #3 | GODLEY INDEPENDENT SCHOOL DISTRICT

NOT FOR REGULATORY APPROVAL, PERMITTING OR CONSTRUCTION. AUBREY M. SLAYBAUGH - TX. 23,077

INTERIOR PERSPECTIVES



CL&I LOOKING WEST



CL&I - LEARNING STAIR

Huckabee

GODLEY ELEMENTARY SCHOOL #3 | GODLEY INDEPENDENT SCHOOL DISTRICT

NOT FOR REGULATORY APPROVAL, PERMITTING OR CONSTRUCTION. AUBREY M. SLAYBAUGH - TX. 23,077

INTERIOR PERSPECTIVES



CLASSROOM COLLAB - FIRST FLOOR



CLASSROOM COLLAB - SECOND FLOOR

Huckabee

GODLEY ELEMENTARY SCHOOL #3 | GODLEY INDEPENDENT SCHOOL DISTRICT

NOT FOR REGULATORY APPROVAL, PERMITTING OR CONSTRUCTION. AUBREY M. SLAYBAUGH - TX. 23,077

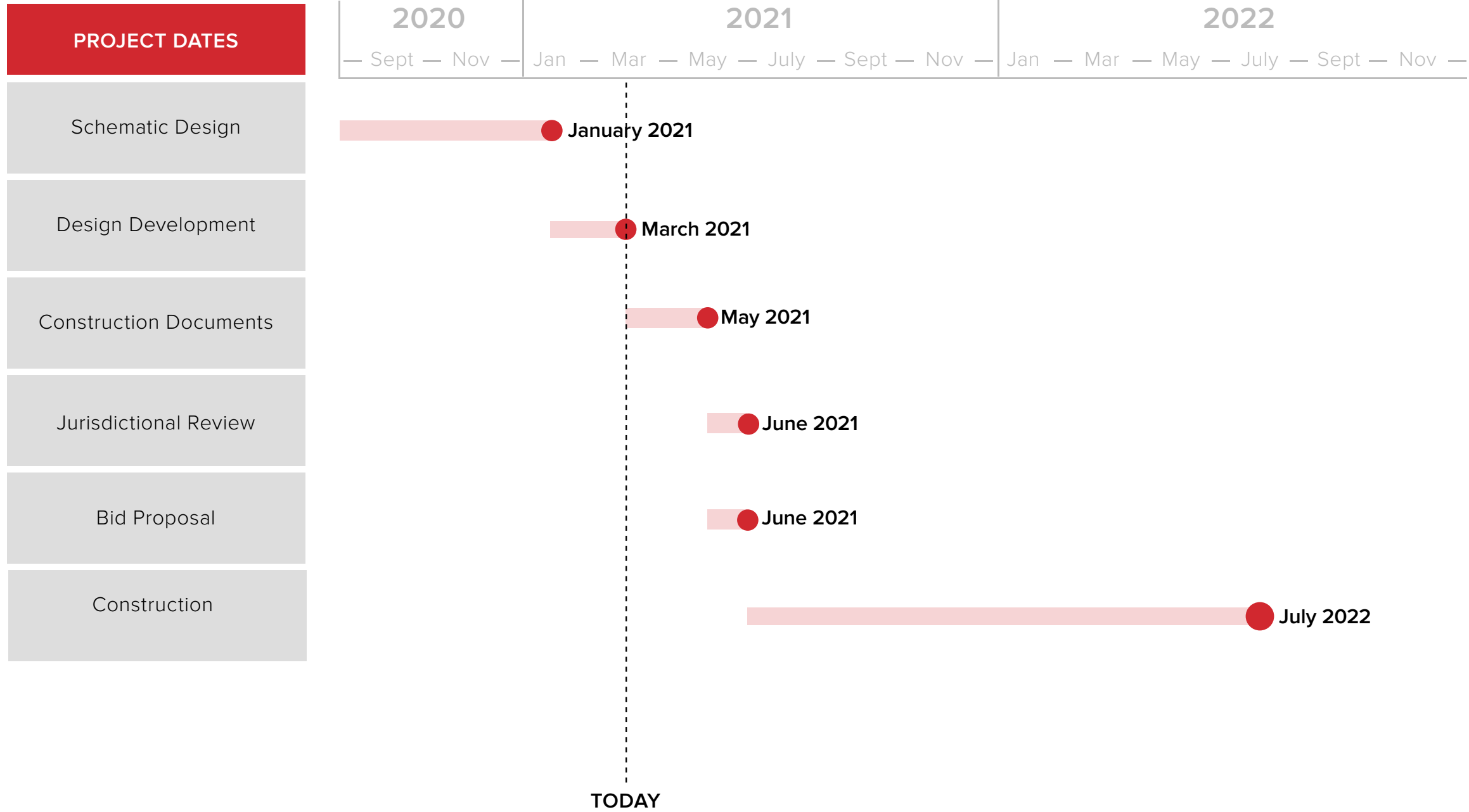
INTERIOR PERSPECTIVES

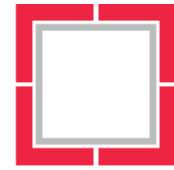
05



GODLEY INDEPENDENT SCHOOL DISTRICT

GODLEY ELEMENTARY SCHOOL #3





MORE THAN ARCHITECTS